

# ESG Management Software



Achieve comprehensive oversight of your organization's Environmental, Social, and Governance (ESG) performance and compliance.

Designed to empower businesses to maintain compliance, mitigate risks, and drive sustainable growth, Corporater ESG Management solution provides the tools needed to seamlessly integrate ESG principles into your core operations.

## Solution Highlights

- **Gain a holistic overview of ESG:** Utilize integrated dashboards to monitor material ESG topics, KPIs, and other metrics at various organizational levels
- **Achieve effective ESG management:** Implement a coordinated approach to ESG topics, providing holistic data for informed decision-making
- **Handle complexity with integrated technology:** Employ robust methodologies and modern tools such as forms and surveys to address corporate challenges
- **Improve risk management:** Conduct comprehensive ESG risk assessments to identify and mitigate potential risks
- **Ensure transparent reporting:** Automate ESG data collection and reporting across the entire value chain



Corporater is recognized by Verdantix  
in Verdantix 2024 Buyer's Guide: Governance,  
Risk and Compliance Software

## Why Top Organizations Choose Corporater



### Trusted Technology

For over 20 years, Corporater has been delivering business management solutions to organizations worldwide.



### Comprehensive GPRC

Centralize your GRC and Performance efforts with a unified platform, ensuring comprehensive governance.



### Flexible Configuration

Easily tailor your solution to meet your evolving objectives and business requirements.



### Rapid Time-to-Value

Achieve your business objectives faster with seamless integration and rapid deployment.



### Scalable Across the Enterprise

Corporater solutions scale effortlessly from mid- to global enterprises, supporting your growth at every stage.



### Industry-Leading Security

Corporater is VLS Veracode Verified and adheres to the highest data security standards.



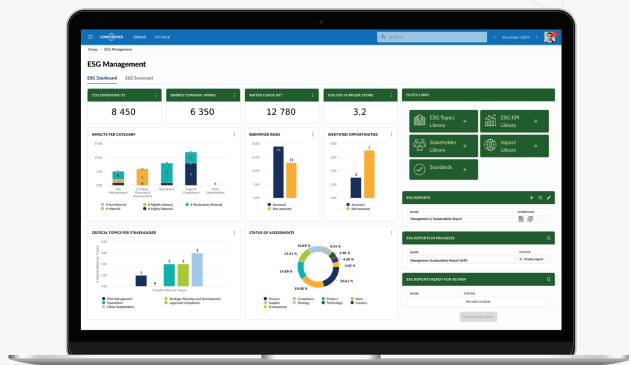
### User-Centric Design

Corporater's intuitive, user-friendly interface is designed for easy adoption across all levels of your organization.



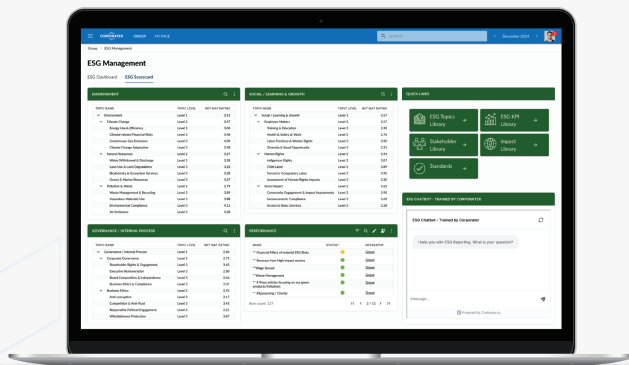
### Recognized by Top Analysts

Corporater is recognized by top analysts including Gartner, Wheelhouse Advisors, GRC 20/20, and Verdantix.



### Comprehensive ESG Oversight

- Gain a unified view of ESG performance across all business units
- Track key ESG metrics and trends on integrated dashboards that provide immediate insights into performance and areas for improvement
- Ensure alignment with sustainability goals and regulatory requirements by monitoring compliance across all levels of the organization
- Identify and address gaps in ESG performance proactively by leveraging advanced analytics

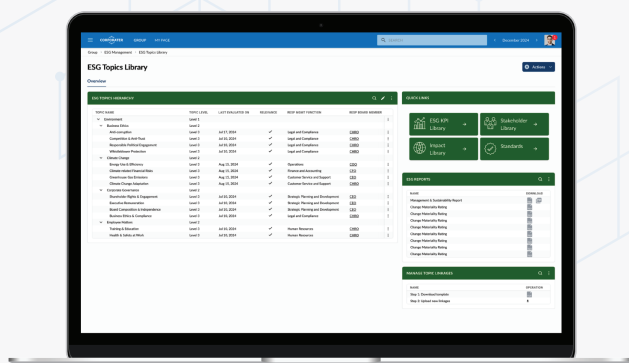


### Compliance with ESG Standards

- Ensure compliance with key standards, including CSRD (Corporate Sustainability Reporting Directive) and ESRS (European Sustainability Reporting Standards)
- Automate compliance tracking and reporting to meet evolving regulatory requirements
- Customize compliance workflows to ensure precise adherence to industry-specific regulations
- Generate reports that align with global ESG frameworks and standards

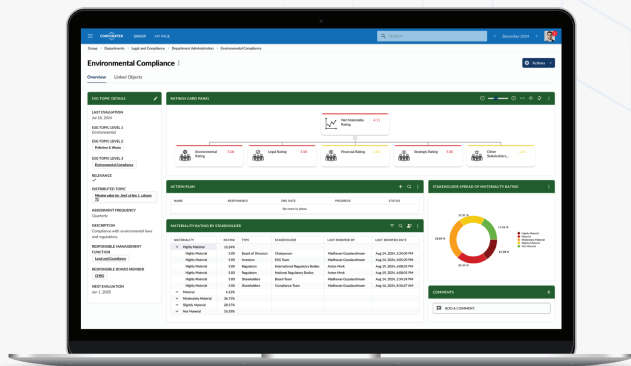


All Corporater solutions can be used independently or seamlessly integrated into a custom GRC or GPRC system.



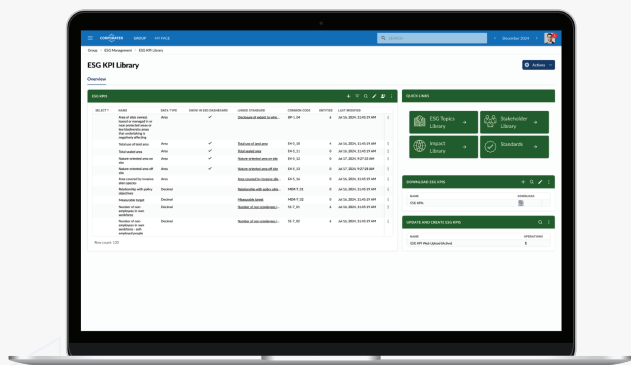
### Standardized Risk and Materiality Assessment

- Use the Impact Library to standardize assessments across multiple business units, locations, and impact categories
- Standardize assessments and manage environmental and financial impacts, as well as strategic and legal implications
- Involve different stakeholders in assessing materiality with a modern, questionnaire-based materiality, risk, and impact assessment



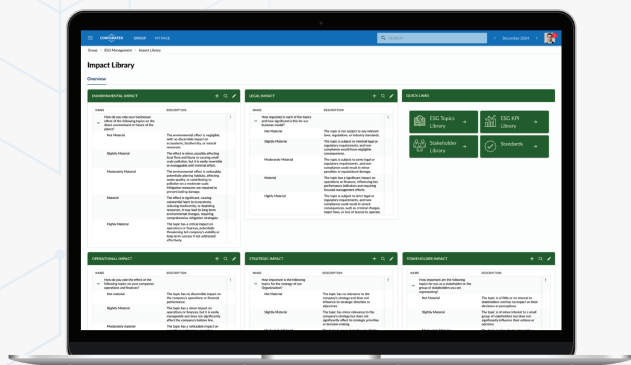
## Stakeholder Engagement and Transparency

- Use the Stakeholder Library to identify and manage key stakeholder relationships, ensuring that all relevant parties are engaged and informed about your organization's ESG initiatives
- Collect data from various departments to create a comprehensive and accurate view of ESG performance
- Provide stakeholders with clear and accessible reports generated from ESG data
- Foster trust through transparent communication of ESG status via ESG dashboards and reports



## Data-Driven Decision Making

- Leverage data from the ESG KPI Library to make informed decisions based on industry-specific metrics that align with global ESG frameworks
- Utilize pre-built KPI templates to streamline data collection and analysis, ensuring consistency and accuracy in reporting across all business units
- Enable data-driven decision-making by integrating KPI data into customizable dashboards, providing visibility into ESG performance and trends
- Facilitate cross-departmental collaboration by sharing standardized KPI data



## Proactive Risk Management

- Use the Impact Library to predict potential ESG impacts and develop proactive strategies that mitigate risks and enhance sustainability performance
- Analyze a broad range of potential ESG impacts, from environmental incidents to social issues, to understand their effects on your business
- Support stakeholder engagement by clearly communicating potential ESG impacts and the steps your organization is taking to address them



Corporater solutions are designed with an intuitive user interface, making it easy for users to quickly access the information they need, complete tasks, and generate reports.

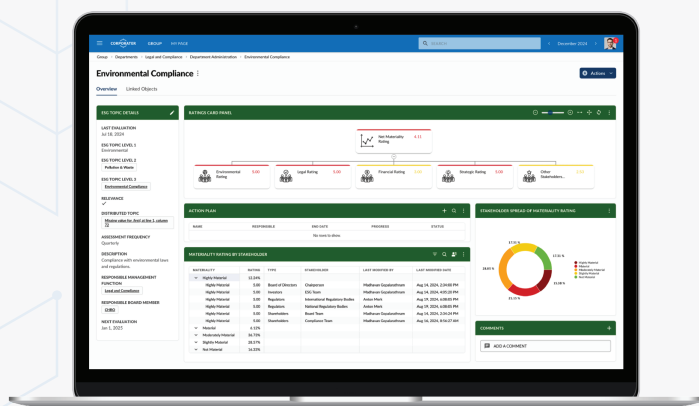
## Solution Features

- Access Control / Permissions
- Alerts and Notifications
- Alignment of ESG Initiatives with Strategic Objectives and Performance Goals
- Audit Log
- Automated Workflows
- Biodiversity Risk Assessment
- Business Framework Support
- Compliance with ESG Standards and Frameworks (e.g., CSRD, ESRS, SASB, TCFD, CDSB, GRI, ISO 26000, UN's Sustainable Development Goals, and others)
- Cross-departmental Collaboration
- Customizable Branding
- Data Integration (Automated and Manual Data Input)
- Data Visualization
- Double Materiality Assessment
- Environmental Impact Assessment
- ESG Dashboards
- ESG KPI Library
- ESG Metrics
- ESG Reporting
- ESG Risk Assessment
- ESG Topics Library
- ESRS Reporting (incl. XBRL)
- GRI Reporting
- Intuitive User Interface
- Materiality Rating
- Policy Management
- Risk Assessment and Management Tools
- Risk Management Integration
- Single Sign-On (SSO)
- Stakeholder Engagement Tools
- Stakeholder Library
- Third-Party Data Integration
- Version Control

*“Corporater’s Sustainability or ESG Management offering is thoughtfully designed and addresses key challenges organizations face in today’s evolving ESG landscape, particularly with the EU CSRD.”*



Michael Rasmussen  
GRC Analyst and Pundit | GRC 20/20 Research



- ✓ Flexible configuration and customization
- ✓ Industry-leading security
- ✓ Ongoing support and innovation
- ✓ Rapid implementation
- ✓ SaaS, on premise, or private cloud deployment

Request your demo today at [www.corporater.com/requestdemo](https://www.corporater.com/requestdemo)



Corporater is a leading global provider of enterprise software solutions for Integrated Governance, Performance, Risk, and Compliance (GPRC) management. Corporater empowers medium and large organizations to achieve their objectives for effective GRC and Performance programs. Whether it is traditional challenges, such as enterprise risk management, performance and strategy management, and compliance management, or emerging challenges such as ESG or operational resilience, Corporater can deliver an integrated, holistic system on one platform. Learn more at [www.corporater.com](https://www.corporater.com)

BRAZIL | GERMANY | NORWAY | INDIA | KSA | NETHERLANDS  
ROMANIA | SOUTH AFRICA | UAE | UK | USA



[www.corporater.com](https://www.corporater.com)