



The Corporater Way

- Manage your strategy, tactics, and operations in one place
- Eliminate silos and connect your entire organization
- Bridge the gap from insight to impact to drive business outcomes
- Run your business operations efficiently as a connected enterprise

Eliminate silos and jumpstart your journey to a connected enterprise

No matter where you are in your digital transformation journey, Corporater can help you get to the next step. Corporater enables organizations to digitalize and automate all aspects of their business, connect data with processes and people, and make smarter, data-driven decisions that drive business outcomes.

Strategic alignment is the cornerstone of good governance. Corporater enables organizations to connect the strategic, tactical, and operational layers of their business with a single tool, eliminate silos, and operate efficiently as a connected enterprise.

Manage your strategy, tactics, and operations in one place

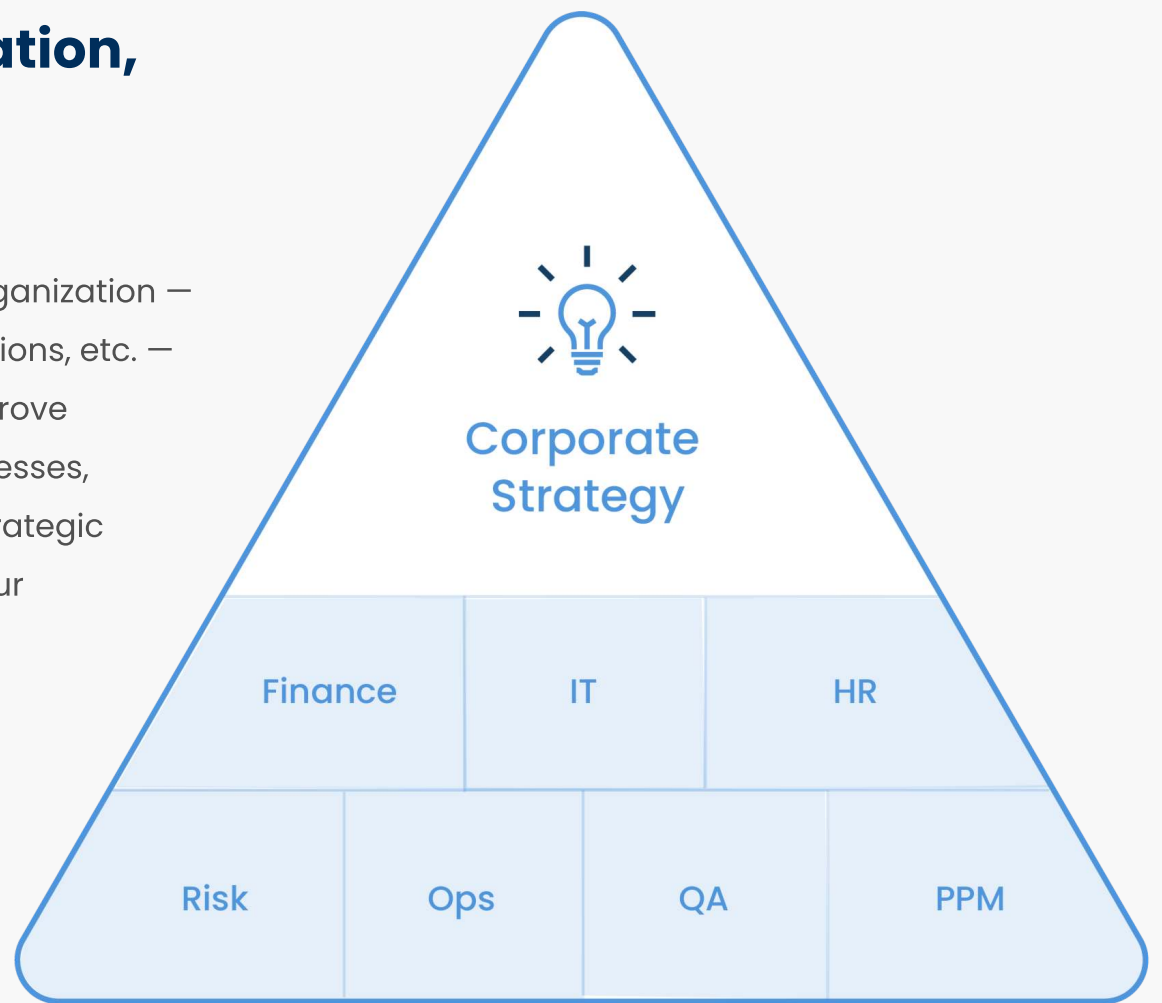
Manage your strategy, tactics, and operations with a single digital tool. Connect your operational units and maximize the cooperation between them. Automate your processes, optimize operational workflows, and provide everyone in your organization with a single source of truth.



Connect your entire organization, not just your teams

With Corporater, you may connect your entire organization — teams, departments, business units, facilities, regions, etc. — using a single digital tool. Eliminate silos and improve efficiency by sharing common terminology, processes, and templates, and achieve a company-wide strategic alignment by keeping everyone connected to your corporate strategy.

A company-wide, strategic alignment leads to improved business performance, more engaged employees, more efficient operations, and higher long-term returns.



UNIFIED: Language ▪ Process ▪ Collaboration ▪ Prioritization

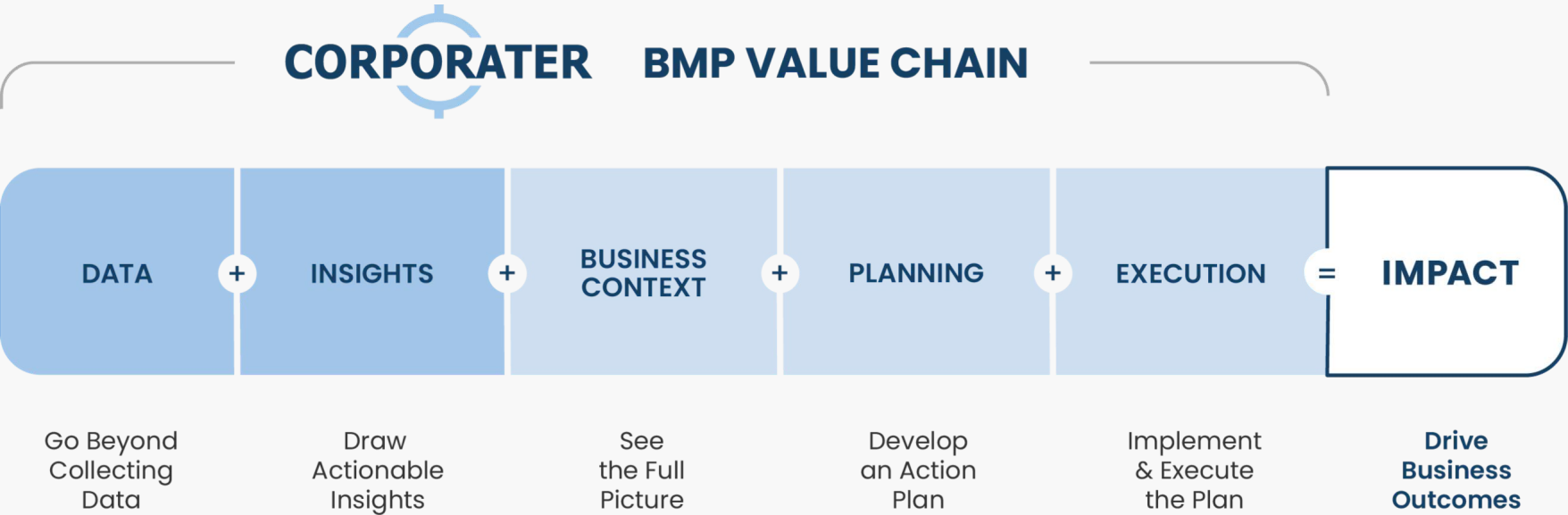
“

Data and insights alone cannot drive business outcomes. To achieve business impact, insights need to be reviewed in business context and be put into action through a well-executed plan.

Bridge the gap from insight to impact

Data and insights alone cannot drive business outcomes. To achieve business impact, insights need to be reviewed in business context and be put into action through a well-executed plan.

Software solutions built on Corporater Business Management Platform (BMP) are engineered with five key components — **data, insights, business context, planning, and execution**. In combination these components function as a value chain that enables organizations to uncover actionable insights, review them in business context, develop a plan, and put the plan into action to **drive measurable business outcomes**.

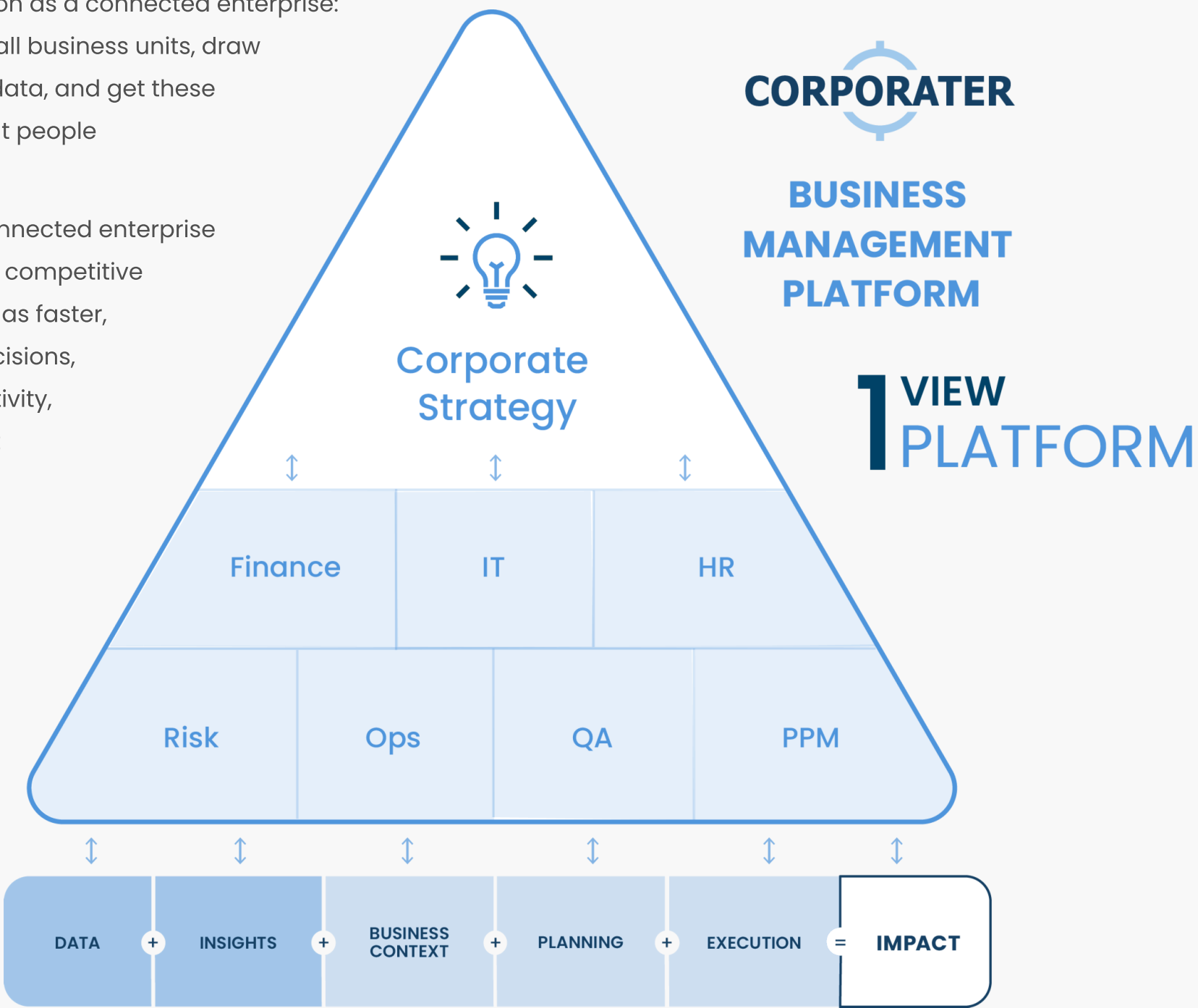


DATA	The value in data is its potential to generate insights that lead to business outcomes. Corporater enables organizations to collect and combine data from various data sources (via manual and / or automated input), scrub it in its raw form, and format it for visualization and analysis.	
+		
INSIGHTS	Draw actionable insights. Corporater enables organizations to transform raw data into business intelligence by enriching data through “man + machine” approach and extracting insights within the tool. (Corporater can also integrate with third-party insights tools.) This allows organizations to gather all insights that a solid business case is built upon.	
+		
BUSINESS CONTEXT	Data insights without the right business context are meaningless. Corporater enables organizations to have a “full picture” overview with data insights displayed within the context of a specific department, entity, or the entire business, so that users could make smarter, data-driven decisions.	
+		
PLANNING	Turning insights into action requires a proper plan. Corporater enables users to use uncovered insights to develop integrated project plans complete with project objectives, key initiatives, milestones, task owners, risk & cost analysis, and due dates.	
+		
EXECUTION	Delivering business impact is dependent on a successful execution of each item outlined in the project plan. Corporater provides an execution engine that drives the workflow / processes of your plan allowing you to execute multiple tasks in parallel or sequentially.	
		IMPACT
		Corporater BMP Value chain enables organizations to drive business outcomes such as:
		<ul style="list-style-type: none">■ Increased revenue and growth■ Increased profitability■ Strengthened business resilience■ Effective governance and oversight■ Improved business performance■ Ensured compliance and quality assurance■ Reduced cost■ Reduced risk and threats■ Increased productivity and engagement■ Increased retention rates and employee satisfaction■ Increased shareholder value■ Improved business operations■ Improved business maturity

Run your business operations as a connected enterprise

Corporater enables organizations to see the whole picture and function as a connected enterprise: collect data from all business units, draw insights from the data, and get these insights to the right people at the right time.

Operating as a connected enterprise locks in long-term competitive advantages, such as faster, more effective decisions, increased productivity, and more efficient operations.



Smarter Decisions

Organizations that can input data and distribute insights across all its business units can make decisions more effectively.



Complete Oversight

Having insights from all your teams, departments, and business units allows you to easily see where you need to make adjustments.



More Efficient Operations

Interconnecting your operations will help you achieve more accurate tracking, uncover gaps, and optimize resources where needed.

OUR OFFICES

Wherever you are in the world, we are here for you



OFFICES AROUND THE GLOBE

12

SERVING CUSTOMERS IN OVER

50 countries

Corporater is headquartered in Stavanger, Norway, and we have a network of offices around the world to serve our customers and partners wherever they need us.

Our global presence enables us to serve and support our customers around the world. We operate in over 50 countries in Europe, North & South America, Asia, and the Middle East & Africa.

CONTACT

Get in touch with us

To learn more about how Corporater can help you manage your business and to contact us, visit:

www.corporater.com



Enabling organizations to drive business outcomes since 2000.



Corporater is a global software company that enables medium and large organizations worldwide to manage their business with integrated solutions for governance, performance, risk, and compliance built on a single platform.

We use our gains to make social impact.

www.corporater.com

