

Project & Portfolio Management

Connect your teams, projects, portfolios, and strategic objectives with a single system to improve efficiency across your entire project and portfolio lifecycle.

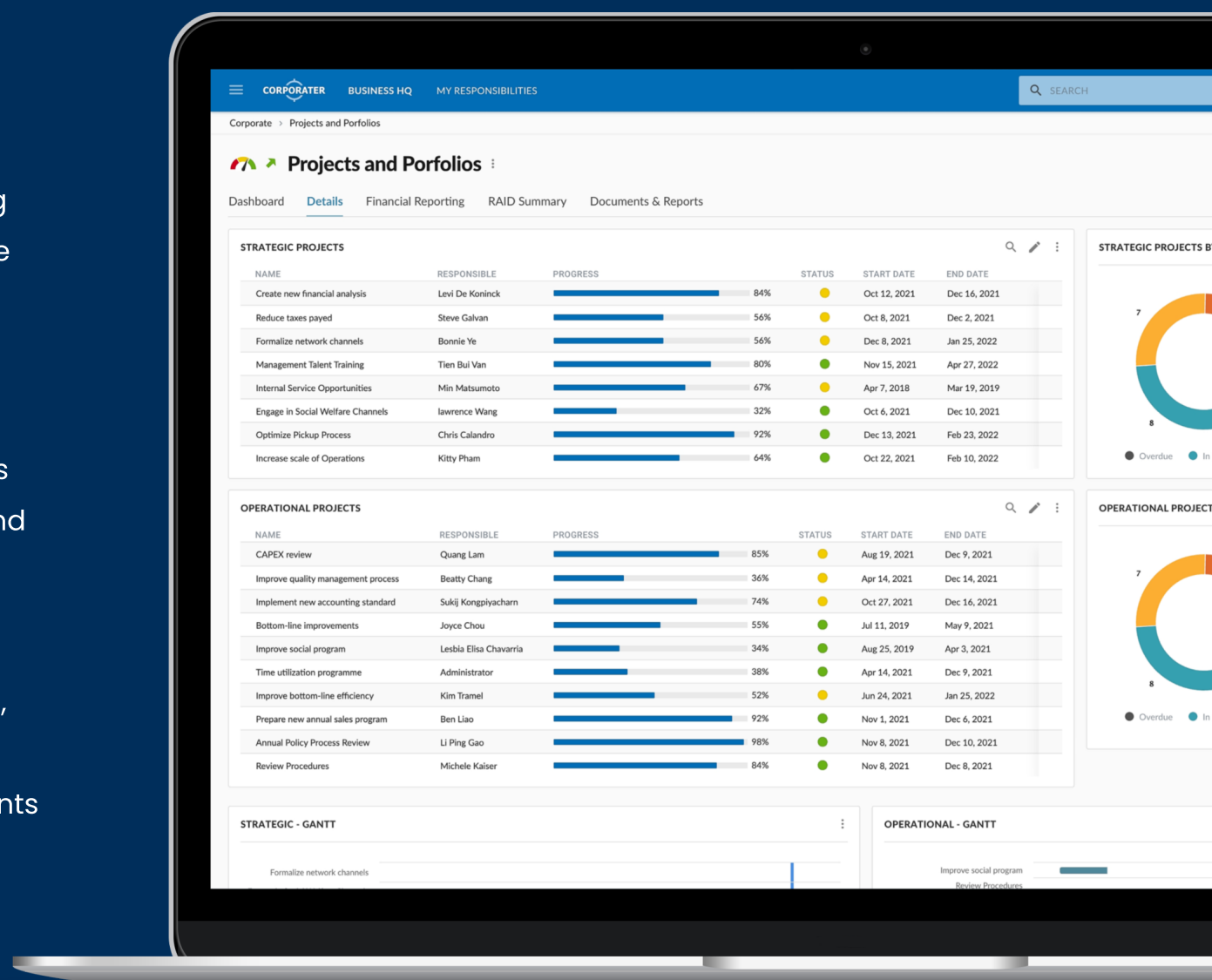
Project & Portfolio Management

Connects your teams, projects, and portfolios, and improve your operations by bringing together project management, workflow automation, resource allocation, risk mitigation, and automated reporting into a single integrated system.

Corporater Project and Portfolio Management (PPM) software is an integrated digital tool that enables organizations to efficiently plan, execute, monitor, control, and close projects and project portfolios across their enterprise. It enables senior management and PPM leaders to align project portfolios with corporate strategy, prioritize initiatives according to strategic goals, and make data-informed decisions that drive business outcomes. The solution comes with a robust suite of PPM tools including executive dashboards, project management planning and execution, task management, budgeting, prioritization, and reporting.

Solution Highlights

- Drive better business decisions by bringing all your projects and portfolios into a single integrated system and linking them with your strategic objectives
- Achieve a holistic oversight of your project portfolio program and ensure that projects and objectives are strategically aligned and communicated across the organization
- Automate your PPM processes
- Manage projects and portfolios of any size, understand dependencies between them, and make resource and budget adjustments to deliver the most value to your organization



Solution Benefits & Functionalities

Corporater enables organizations to digitalize and transform their operations by providing them with a comprehensive set of PPM tools needed to achieve operational efficiency and excellence. Corporater accommodates various PMO maturity levels and fits the needs of organizations from a wide range of industries including government, healthcare, finance, insurance, manufacturing, logistics, technology, oil & gas, education, telecommunications, and others.



Create a digital twin of your organization

Built as a flexible, configurable software, Corporater PPM solution can mirror your organizational structures and easily adapt to your existing business processes.

- Visualize and track the progress of your projects and initiatives using Gantt charts and a stage-gate process (phase-gate process)
- Make ongoing optimizations and modifications to your processes and workflows as your organization's needs evolve



Have a complete overview of your projects and portfolios

Corporater enables you to have an at-a-glance overview of all your projects and portfolios, and use custom views — sorted by owners, business units, or business objectives — to understand how individual initiatives impact your business.

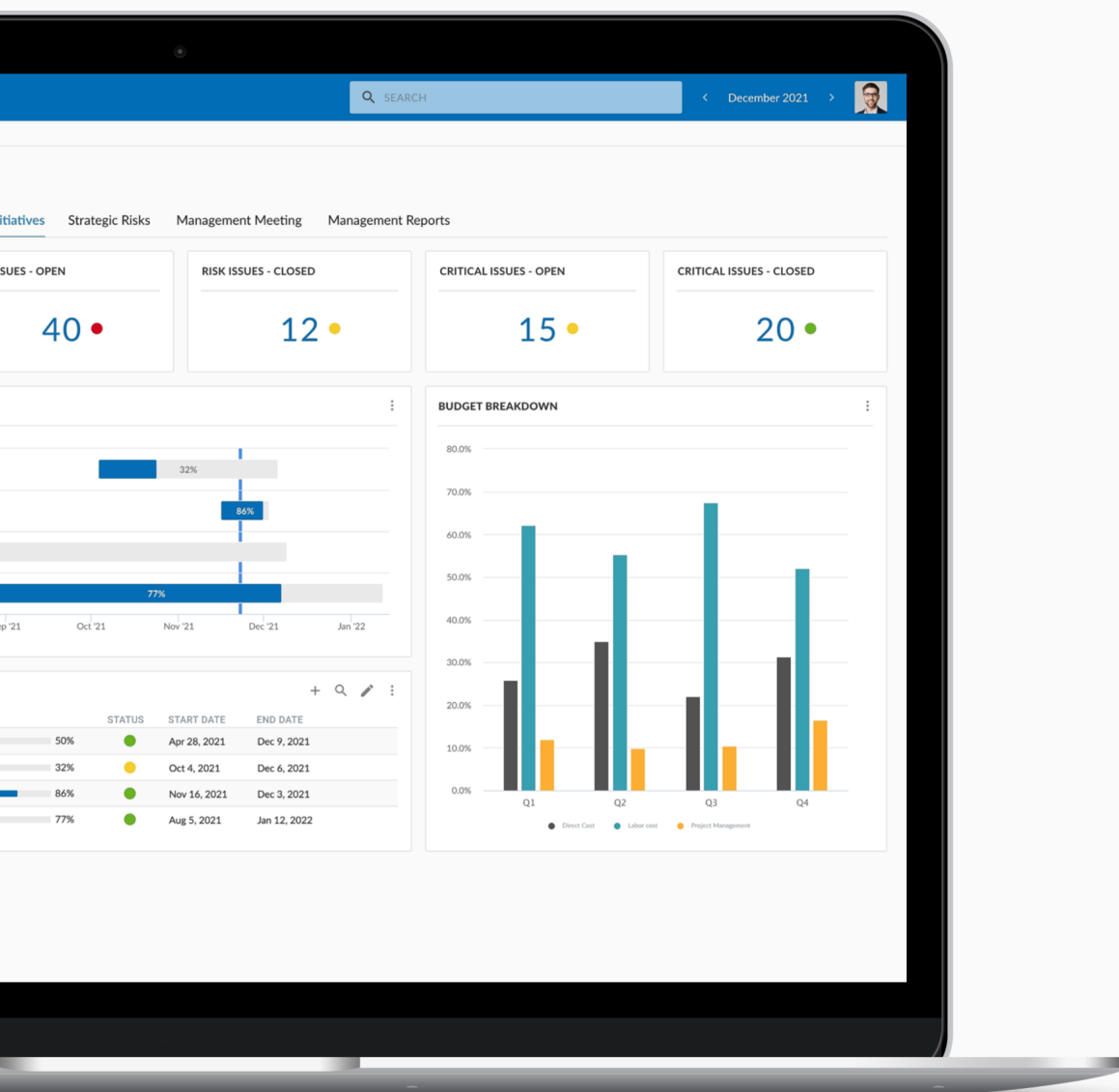
- Monitor work happening across multiple teams, departments, and business units
- See how all your projects are progressing, and drill down for more detail to understand and address risks and opportunities
- Create custom high-level portfolio overviews to keep your senior management informed about the progress and status of important initiatives



Keep your projects on track

Manage the entire lifecycle of your projects.

- Organize and prioritize your projects, define roles and responsibilities, allocate resources, set your teams' priorities, assign tasks, and track their completion
- Use Gantt charts to illustrate project schedules and progress
- Set up automated reminders for overdue items
- Track the status of milestones, budgets, issues, and risks
- Generate reports for senior management and key stakeholders





Integrate all your PPM data into a single source of truth

Transform your project and portfolio data into relevant, actionable information for making better business decisions. Corporater enables organizations to combine data from various data sources (via automated and manual input), analyze it in business context, and display it neatly on custom dashboards, where users can take action on identified insights.



Improve communication and collaboration

Communication is the key ingredient that keeps projects moving and on track. Corporater enables you to keep your key stakeholders informed throughout the duration of your projects.

- Communicate resource needs, costs, and cost comparisons during the planning phase
- Share progress reports, issues handled, and status updates during the execution phase
- Use comments widgets to share updates, record meeting notes, upload documents, and generate project progress and status reports



Save time and improve efficiency with automated processes and workflows

Automate manual repetitive tasks, so that that your teams could stay focused on more important tasks that deliver value for your organization. Reduce administrative burden and a room for error with automated processes, automated alerts and notifications, and automated reporting.



Grow into the future


Built on Corporater Business Management Platform, Corporater PPM software can be seamlessly extended to other business management areas such as governance, risk, and compliance (GRC), performance management, or internal audit management, all within the same system.



Corporater Project & Portfolio Management solution is designed with an intuitive user interface making it easy for users to quickly access the information they need, manage projects, collaborate, and generate reports.


Solution Key Capabilities

Corporater Project and Portfolio Management (PPM) software comes pre-configured with industry best practice frameworks, templates, and functionalities needed for an effective project and performance management.




Custom Dashboards

Go beyond traditional dashboards. Configure custom business dashboards to display relevant information, KPIs, and other metrics. No coding needed.




BI & Analytics

Connect, collect, organize, visualize, and analyze your data in business context to uncover actionable insights and make smarter, data-driven decisions.




Powerful Reports

Generate comprehensive reports in a variety of popular formats, including Word, Excel, PPT, and PDF. Include data visualizations directly from the system.




Alerts & Notifications

Create custom alerts to notify key stakeholders when a KPI moves above a specified threshold, when a goal is reached, or when a new issue arises.




Meeting Management

Set up meeting invites, create agendas, tag projects to be reviewed, add notes and attachments, and send out meeting invites to attendees.




Flexible Configuration

Create a digital twin of your organization. Corporater features an agile, flexible configuration environment managed directly by end users.



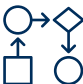
Data Visualization

Visualize your data story with custom-colored charts, graphs, risk heat maps, strategy maps, and more. Add your brand colors and design elements.




Business Framework Support

Establish, visualize, and align goals, objectives, and thresholds across the organization according to well-known business frameworks.




Automated Workflows

Automate your business processes and workflows to streamline operations, increase accountability, and ensure adherence to your procedures.




Data Integration

Have a single source of truth. Corporater comes with a powerful data integration engine built to integrate large amounts of data from a wide range of sources.



Access Control

Assign custom user access based on user role and control user permissions to manage content visibility and access to specific dashboards and features.



Single Sign-on (SSO)

Securely authenticate users with single sign-on (SSO). SSO allows users to log in with a single set of credentials across multiple platforms.

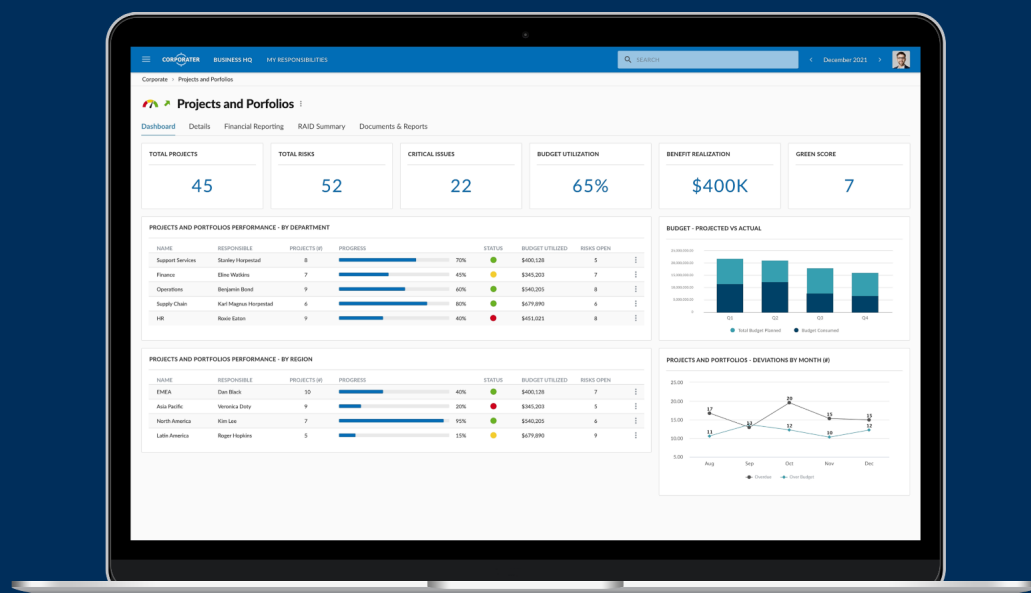
Learn more about Corporater key capabilities at www.corporater.com/key-capabilities.



Solution Features

- Intuitive user interface
- PPM dashboards
- Portfolio management and monitoring
- Resource planning and allocation
- Project management and execution
- Project and portfolio risk management
- Project portfolio optimization
- Project management
- Task management
- Stage-Gate model support
- Workflow visualization
- Alignment of projects and portfolios with strategic initiatives and performance goals
- Business framework support
- Automated workflows
- Analytics
- KPIs, KRIs, and metrics
- Data visualization
- Gantt charts and progress charts
- Collaboration
- Prioritization
- Planning
- Value driver mapping
- Data integration (automated and manual data input)
- Data roll-ups (quantitative and qualitative)
- Third-party system data integration
- Integration of performance with GRC
- Meeting management support
- Document management
- Version control
- Alerts and notifications
- Customizable branding
- Access control / permissions
- SSO

Corporater Quick Facts



- ✓ Flexible configuration
- ✓ Rapid implementation
- ✓ Industry-leading security
- ✓ SaaS, on premise, or private cloud deployment
- ✓ Ongoing support and innovation

Why top organizations choose Corporater



Trusted & Proven Technology

Corporater has been delivering business management solutions since 2000.



Flexible Configuration

Have it your way! Create a solution that fits your specific business requirements.



Rapid Implementation

Get up and running in weeks, not months, with Corporater ready-to-go accelerators.



Powerful Data Integration

Integrate data from various sources to have a complete overview of your business.



Recognized by Top Industry Analysts

Corporater is recognized by top industry analysts including Gartner.



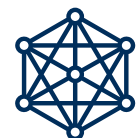
Industry-leading Security

Corporater is VL5 Veracode Verified and offers the highest level of security for your data.



Deployment of Your Choice

Select deployment option that fits your needs – SaaS, on premise, or private cloud.



Unlimited Scalability

Scale as your needs evolve. Run your operations efficiently as a connected enterprise.



World-class Customer Support

We are here for you with premium customer support and continuous innovation.



Corporater is a global software company that enables medium and large organizations worldwide to manage their business with integrated solutions for governance, performance, risk, and compliance built on a single platform.

We use our gains to make social impact.

www.corporater.com

