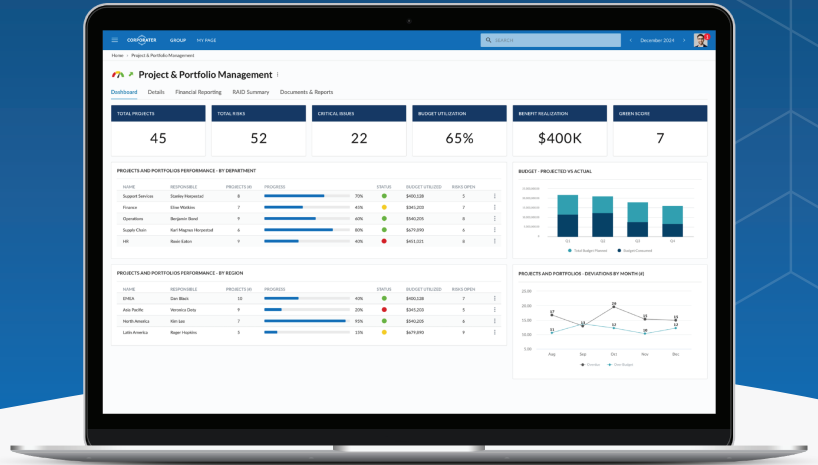


Project & Portfolio Management



Achieve strategic alignment and operational efficiency with Corporater Project and Portfolio Management (PPM) software.

Connect your teams, streamline your processes, and make data-driven decisions with a single, integrated system designed to manage your entire project and portfolio lifecycle.

Solution Highlights

- **Integrate Projects and Portfolios:** Consolidate all projects and portfolios into one unified system to improve efficiency, enhance collaboration, and achieve better strategic alignment across teams
- **Holistic Oversight:** Gain a comprehensive view of your project portfolio and ensure alignment with organizational goals
- **Automate Processes:** Enhance efficiency by automating project management workflows and task management
- **Custom Dashboards and Reporting:** Create tailored dashboards and generate detailed reports to keep stakeholders informed
- **Risk Management:** Monitor and manage risks across all projects and portfolios to ensure timely mitigation

Corporater is recognized by Gartner®
in Gartner Magic Quadrant for Strategic Corporate Performance Management (CPM)

Why Top Organizations Choose Corporater

- Trusted Technology**
For over 20 years, Corporater has been delivering business management solutions to organizations worldwide.
- Comprehensive GPRC**
Centralize your GRC and Performance efforts with a unified platform, ensuring comprehensive governance.
- Flexible Configuration**
Easily tailor your solution to meet your evolving objectives and business requirements.
- Rapid Time-to-Value**
Achieve your business objectives faster with seamless integration and rapid deployment.
- Scalable Across the Enterprise**
Corporater solutions scale effortlessly from mid- to global enterprises, supporting your growth at every stage.
- Industry-Leading Security**
Corporater is V15 Veracode Verified and adheres to the highest data security standards.
- User-Centric Design**
Corporater's intuitive, user-friendly interface is designed for easy adoption across all levels of your organization.
- Recognized by Top Analysts**
Corporater is recognized by top analysts including Gartner, Wheelhouse Advisors, GRC 20/20, and Verdantix.

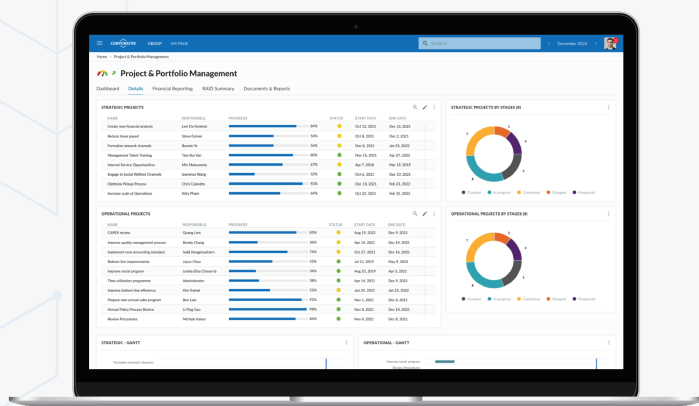
Solution Features

- Access Control / Permissions
- Alerts and Notifications
- Alignment of Projects and Portfolios with Strategic Initiatives and Performance Goals
- Analytics
- Automated Workflows
- Budgeting
- Business Framework Support
- Collaboration
- Customizable Branding
- Data Integration (Automated and Manual Data Input)
- Data Roll-Ups (Quantitative and Qualitative)
- Data Visualization
- Document Management
- Gantt Charts and Progress Charts
- Integration of Performance with GRC
- Intuitive User Interface
- KPIs, KRIs, and Metrics
- Meeting Management Support
- Planning
- Portfolio Management and Monitoring
- PPM Dashboards
- Prioritization
- Project and Portfolio Risk Management
- Project Management and Execution
- Project Portfolio Optimization
- Single Sign-On (SSO)
- Stage-Gate Model Support
- Task Management
- Third-Party System Data Integration
- Strategy Management
- Value Driver Mapping
- Version Control
- Workflow Visualization

“Organizations choose Corporater as they seek a single agile and integrated architecture to automate a range of GRC, performance management, and other business processes.”



Michael Rasmussen
GRC Analyst and Pundit | GRC 20/20 Research



- ✓ Flexible configuration and customization
- ✓ Industry-leading security
- ✓ Ongoing support and innovation
- ✓ Rapid implementation
- ✓ SaaS, on premise, or private cloud deployment

Request your demo today at www.corporater.com/requestdemo



Corporater is a leading global provider of enterprise software solutions for Integrated Governance, Performance, Risk, and Compliance (GPRC) management.

Corporater empowers medium and large organizations to achieve their objectives for effective GRC and Performance programs. Whether it is traditional challenges, such as enterprise risk management, performance and strategy management, and compliance management, or emerging challenges such as ESG or operational resilience, Corporater can deliver an integrated, holistic system on one platform.

Learn more at www.corporater.com

BRAZIL | GERMANY | NORWAY | INDIA | KSA | NETHERLANDS
ROMANIA | SOUTH AFRICA | UAE | UK | USA



www.corporater.com