

# **CORPORATER**

---

Global software company enabling medium and large organizations worldwide to manage their business with integrated solutions for governance, performance, risk, and compliance built on a single platform

## COMPANY OVERVIEW

# For over 20 years Corporater has been enabling organizations to drive business outcomes

---

FOUNDED IN STAVANGER,  
NORWAY

**2000**

OFFICES AROUND  
THE GLOBE

**10**

BUSINESS MANAGEMENT  
PLATFORM

**1**

VL5 VERACODE  
SECURITY RANKING

**100/100**

OUT-OF-THE-BOX  
GPRC SOLUTIONS

**40+**

END USERS IN OVER  
50 COUNTRIES

**100,000+**

**Corporater is a global software company that enables medium and large organizations worldwide to manage their business with integrated solutions for governance, performance, risk, and compliance built on a single platform. We use our gains to make social impact.**

Corporater Business Management Platform (BMP) is a robust, enterprise-grade software that enables organizations to have a complete overview of their business, create a digital of their organization, and operate efficiently as a connected enterprise. All solutions built on Corporater BMP can be seamlessly integrated with one another or be used independently as purpose-built point solutions.

# Contents

---

<b>CEO'S MESSAGE</b>	<b>4</b>
<b>ABOUT US</b>	<b>6</b>
<b>OUR VALUES</b>	<b>8</b>
<b>CORPORATE RESPONSIBILITY</b>	<b>9</b>
<b>SOCIAL IMPACT</b>	<b>12</b>
<b>CORPORATER BMP</b>	<b>14</b>
<b>THE CORPORATER WAY</b>	<b>21</b>
<b>CORPORATER SOLUTIONS</b>	<b>25</b>
<b>CORPORATER PARTNER PROGRAM</b>	<b>34</b>
<b>OUR OFFICES</b>	<b>38</b>
<b>CONTACT</b>	<b>39</b>

# Our Code of Business Conduct guides us on the path towards the vision that started it all

---

**When I started the Corporater adventure in the year 2000, I was inspired and driven by the vision of developing a business management platform that gave a single view of a company's business management. Today we are the experts in developing complete, configurable business solutions built within a single platform that adapts to our customers' specific business requirements.**

We acknowledge that all businesses are different, and it is important to us to reflect this uniqueness in every business solution that we create. Therefore, our platform is designed as an agile, low code, configurable system.

To create such a platform is a lofty goal, and I am aware of what reaching this goal will require from not only me, but also from our employees, our partners, and the company. I strongly believe that our acquired success rests upon our values, and that these values form the core of how we in Corporater conduct our business – always focusing on doing what is right, by applying the highest standards of ethical conduct in every decision, every relationship and in every interaction.

Our code of business conduct guides us on this path towards the vision that started it all. It unites all of us by guiding our everyday decisions based on honesty, integrity, and trustworthiness.



**We acknowledge that all businesses are different, and it is important to us to reflect this uniqueness in every business solution that we create.**

## **We are here for you**

For over 20 years it has been our pleasure to see our customers drive business outcomes with Corporater solutions. At Corporater we know that no two organizations are alike, which is why we built Corporater as a highly configurable software that adapts to organizations' specific business requirements today and in the future. It is our goal to see our customers succeed, and we take great pride in supporting our customers year after year.

We thank you for your trust and look forward to supporting you on your digital transformation journey.

*Tor Inge Vasshus*

**Tor Inge Vasshus**

Founder & CEO | Corporater

## ABOUT US

# We are Corporater

---

**Corporater is a global software company that enables medium and large organizations worldwide to manage their business with integrated solutions for governance, performance, risk, and compliance built on Corporater Business Management Platform.**

**We use our gains to make social impact.**

Corporater was founded in 2000. We are headquartered in Stavanger, Norway, and have 10 offices around the globe, supporting 450+ customers in over 50 countries.

Corporater Business Management Platform (BMP) is an enterprise-grade software that enables organizations to manage their entire business with a single tool. Corporater software is intuitive, easy to use, and highly configurable allowing organizations to create a solution that fits their specific business requirements today and in the future. With Corporater, organizations can create a digital twin of their organization, digitize their processes and workflows, and function efficiently as a connected enterprise. No coding needed.

All solutions built on Corporater BMP can be used independently as point solutions, or be seamlessly integrated with one another allowing organizations to scale as their needs evolve.



### Our Mission

---

Empower medium and large organizations to manage their business on a business management platform that adapts to their unique business model, and use our gains to make social impact.



### Our Vision

---

Redefine how business applications are built and used.

Corporater solutions are used by public and private organizations in various industries, including state and local government, banking and finance, insurance, oil and gas, shipping, manufacturing, healthcare, communications, technology, education, energy, logistics, food and agriculture, media, and non-profit.

Corporater has a global partner network and works closely with selected partners to deliver integrated software solutions to customers worldwide. Our Partner Program is designed for many different types of organizations ranging from consulting companies / domain experts to sales and IT partners / system integrators (SIs).

Corporater is a purpose-driven company. We use our gains to support various social impact initiatives aimed to make lasting positive social change and improve the quality of life of those in need.

## Corporater is recognized by Gartner

- Corporater is listed in Gartner® Magic Quadrant for Strategic Corporate Performance Management (CPM)
- Corporater is listed as a representative vendor in 2021 Gartner® "Market Guide for Technologies Supporting a Digital Twin of an Organization"
- Corporater is listed in 2021 Gartner® "Competitive Landscape: Integrated Risk Management" report as a single-vendor suite (integrated) technology provider for Integrated Risk Management program

## OUR VALUES

# Ethics, customer-centric, and servant leadership

---

Ethics, customer-centric, and servant leadership are the values on which we built our organization. They express our shared beliefs across regions and entities, and drive our decisions at all levels of the organization. They shape how we interact with each other, with our customers, and with the society as a whole.



### Ethics

---

We do what is right. We apply our ethical code of conduct to every decision, relationship, and interaction, with our colleagues, partners, customers and vendors.



### Customer-centric

---

We care about our customers and their business. We are professional, accountable, easy to work with, and responsive to our customers' needs.



### Servant Leadership

---

We serve each other. We believe that every person has value and deserves civility, trust, and respect. We work collaboratively and give credit and recognition where it is due.



# Acting responsibly to protect the environment for future generations

---

**Corporater is committed to being an environmentally responsible company. We care about our planet and work diligently to protect it for future generations. Our approach to corporate social responsibility (CSR) includes operating our organization in ways that are socially responsible and environmentally sustainable.**

As a globally active company a sustainable use of budgets and resources is the basis of our business model. Since our foundation in 2000, Corporater has helped organizations worldwide to become more environmentally friendly by digitalizing their processes, therefore lessening their need to print, and helping to reduce their carbon footprint. We aspire to use sustainable business principles in all aspects of our business. We encourage green thinking among our employees and continually update our processes to minimize our environmental impact.



**On average, 125,000 sheets of paper  
can be converted into just 2.5 GB of data.**

# Corporate Social Responsibility

Our Corporate Social Responsibility is deeply rooted in our values — ethics, customer-centric, and servant leadership. We believe that it is our ethical duty to protect the environment for all humanity and the generations to come.

In our ongoing efforts to promote and practice corporate social responsibility, we focus on four key areas:



## Digitalization

On average, 125,000 sheets of paper can be converted into just 2.5 GB of data.

- **Digitalization** allows our customers to go “fra perm til skjerm” = “from binder to screen.”
- **Digital Reports** - Corporater enables customers to create and export great-looking digital reports in a variety of popular formats including Word, Excel, PPT, and PDF.
- **On-the-go access** - We make it possible for our customers to manage their business from anywhere, anytime, and on any device without ever having to print a single sheet of paper.



## Safe Operations

Safe operations means having safety measures in place to protect the staff and the environment.

- **Operational safety** - Corporater is an advocate for putting emphasis on operational safety, effective use of technology and resources, risk assessment, development of adequate infrastructure, and implementation of sustainable goals to make a lasting impact on the environment and the world’s future.
- **Protection through prevention** - We care about safety because we care about the environment, our employees, and our customers and their business.
- **Proactive risk management** - Corporater has developed specialized solutions for proactive risk management, such as Barrier & Hazard Management, to help prevent environmental catastrophes and pollutions to happen.



## Resource Efficiency

Corporater helps organizations to cut cost and improve efficiency by 40%–60%.

- **Automation means less waste** - Corporater enables organizations to automate their processes — achieve more with less resources and less waste.
- **Reduced CO2 Emissions** - We encourage our employees, customers, and partners to replace business trips with video conferencing to help reduce corporate carbon footprint associated with business travel.



## Sustainability

Focus on increasing shareholder value through corporate sustainability.

- **Enabling CSR** - Corporater develops country-specific strategies for corporate sustainability, which is an approach aiming to create long-term stakeholder value through the implementation of strategies that focus on the ethical, social, environmental, cultural, and economic dimensions of doing business.
- **Strategy & sustainability** - Each strategy we develop aims to embed sustainability principles into operational activities, and integrate environmental factors into investment processes for a long-term growth.
- **SDGs** - Corporater actively participates in safe waste disposal in accordance with the UN’s Sustainable Development Goals (SDGs).

# Corporate Digital Responsibility

As a software organization, our greatest contributions to society are our social impact initiatives and our portfolio of solutions built on our Corporate Business Management Platform. Our solutions for governance, performance, risk, and compliance enable organizations to achieve a digital transformation, and, as a result, drive efficiency, improve productivity, and save time and resources.

We are a fully digital organization – our technology can be delivered without ever having to travel. As a matter of fact, in 2021 we successfully implemented a large-scale Enterprise Risk Management solution to a Fortune Global 500 company without ever meeting their team in person.

We maintain high governance standards for the way we conduct business. Based on our values, we apply our ethical code of conduct to every decision, relationship, and interaction, to our colleagues, partners, customers and vendors.

We are dedicated to responsible and ethical corporate digital practices, including ensuring data privacy protection for employees, customers, and other stakeholders, implementing responsible cybersecurity protection, and following responsible data validation and disposal practices.

## UN's Sustainable Development Goals

We support and respect the Ten Principles of the UN Global Compact on human rights, labor, environment, and anti-corruption. Through our social impact initiatives, Corporater works actively towards the fulfillment of the UN's 17 Sustainable Development Goals, with a strong concentration on SDGs 1, 2, 3, 4, 6, 8, 9, 11, and 12.



# Life, Light, and Increase

**We believe in the power of business to end poverty. We believe that by giving our time, resources and energy we can make the world a better place for everyone.**

It is a part of our mission to use our gains to make social impact. We continue to pursue this mission by organizing our own social impact initiatives and by working with non-profit humanitarian organizations. Corporater is an active supporter of Seb's Projects India, the Dina Foundation, and Compassion for Asia. Our primary aim is to improve the quality of life for people living in absolute poverty, and to promote basic social rights such as access to clean water, education, and healthcare.



**Everyone  
deserves  
a good  
life.**

There are three words engraved in mine and my wife's wedding ring — life, light, and increase. It is these three words that symbolize our life's mission — bring life where life seems lost, bring light where there is darkness, bring increase where things seem to decrease.

It is one of my core beliefs that everyone deserves to live a good life. Over the past few decades, it has been my personal, and now also Corporater's, mission to improve the quality of life for those in need and promote the wellbeing of humankind by solving social challenges.

Through our social impact initiatives and joined efforts with our partners, we are able to provide underprivileged groups and communities with access to clean water, education programs, and livelihood opportunities.

Together we can make a difference.

— Tor Inge Vasshus, Founder and CEO | Corporater

# Our Recent Social Impact Initiatives



## Clean Water for Jawadhi Hills

The Jawadhi Hills is a tribal area in the northern part of the state of Tamil Nadu in southeastern India. Due to a lack of proper infrastructure and economic resources, majority of the Jawadhi Hills population lives in extreme poverty. One of the contributing poverty factors is a limited access to safe water. To survive, the people of Jawadhi Hills often resort to drinking unsafe water, putting themselves and their loved ones at risk of waterborne diseases.

Corporater along with Seb's Projects India and Tata Swach By Ncourage Foundation has committed to build eight purifying water systems at villages in Jawadhi Hills. The project aims to provide a total of 720 families (approx. 5,400 people) with access to clean water suitable for drinking, brushing teeth, and cooking.

The first system was implemented on March 22, 2021. As of September 2021, eight water purifier installations were completed – supplying thousands of people with safe drinking water.



## COVID-19 Relief Fund for Andaman Islands

The Andaman Islands is a group of small islands in the Bay of Bengal, between India and Myanmar. Numerous people living in this area suffer from poverty and hunger, and the 2020 COVID-19 pandemic has only made their situation worse. With a full lockdown in place, many people lost their job and food supply became scarce. The need for resources was urgent.

To help the communities in Andaman Islands, in August of 2020 Corporater set up a COVID-19 Relief Fund. In the months to follow, the Corporater-donated funds were used to purchase and distribute essential food supplies to approx. 2,470 families. The aim of this initiative was to ensure that the families on Andaman Islands could survive the pandemic, send their children back to school, and live a good, healthy life long after the pandemic is over.

To learn more about our social impact initiatives visit [www.corporater.com/social-impact](http://www.corporater.com/social-impact)

# Corporater Business Management Platform

---

Corporater Business Management Platform (BMP) is an enterprise-grade software that enables organizations to connect and effectively manage their governance, performance, risk, and compliance with a single tool.

Corporater BMP provides the flexibility, security, and features needed to meet the demands of today's modern organizations.



## Flexible Configuration

---

And we mean really flexible. Corporater BMP offers more configuration options than any other software on the market. Every Corporater solution can be configured precisely per your specific business requirements and be continuously modified as your organization's needs evolve. With Corporater, you're never stuck, never locked in.



## Rapid Implementation

---

No need to code. No need to wait. Get up and running fast with our proven rapid deployment methodology. All Corporater solutions are built as accelerators — pre-configured solutions — allowing you to save resources and get up and running in weeks, not months.



## Ready-to-Go Solutions

---

Discover Corporater ready-to-go solutions pre-configured with industry best practice frameworks, processes, and workflows. All solutions built on Corporater BMP can be used independently as point solutions, or be seamlessly integrated with one another allowing organizations to manage their entire business with a single tool.

# GRC integrated with Performance

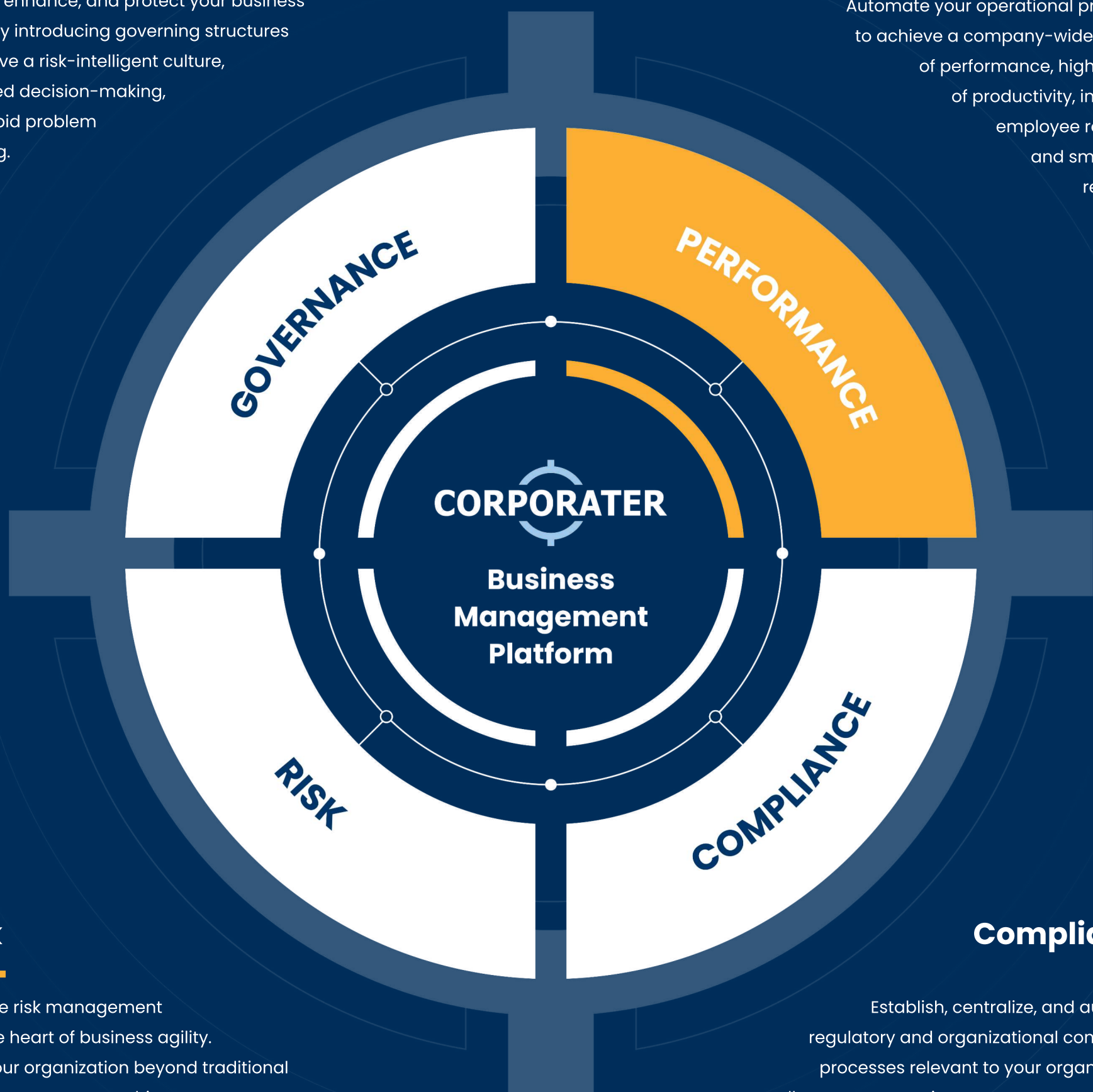
Corporater enables organizations to manage governance, performance, risk, and compliance with a single tool. We put the **P** in GRC!

## Governance

Create, enhance, and protect your business value by introducing governing structures that drive a risk-intelligent culture, informed decision-making, and rapid problem-solving.

## Performance

Automate your operational processes to achieve a company-wide visibility of performance, higher levels of productivity, increased employee retention, and smarter KPI reporting.



## Risk

Effective risk management is at the heart of business agility. Take your organization beyond traditional risk management to achieve a smarter, more realistic risk profile for better decision making.

## Compliance

Establish, centralize, and automate regulatory and organizational compliance processes relevant to your organization's adherence to meeting government standards, laws, rules, and regulations required by your industry.

# Flexible Configuration

---

Corporater was developed with a core belief that software should adapt to the way organizations manage their business, not the other way around. Corporater's flexible configuration options enable you to configure your solution per your specific requirements and make ongoing modifications as your needs evolve.

Corporater is built as a highly configurable software that allows organizations to mirror their organizational structures, processes, and workflows — create a digital twin of their organization — and make continuous modifications and optimizations to suit the needs of their business.

All Corporater solutions are configurable directly by endusers.

Map out and automate complex processes, create exceptions to your workflow rules where needed, and easily update your setup when your requirements change. Need to create a new dashboard or add a new business unit? No problem. Need to create a new custom workflow? Go right ahead.

With Corporater you are never stuck, never locked in.



## Have it your way

---

Configure custom dashboards, automate workflows, visualize data, set up alerts, and more.



## Customize and modify

---

Customize every page to your liking with your brand colors, images, and other design elements.



## Optimize and scale

---

Make ongoing adjustments to your solution. Add entities and optimize your processes where needed.



**Your solution, your way, today and in the future.**





## Create a digital twin of your organization

Corporater makes it easy for organizations to create a virtual representation of their organization. All Corporater solutions can be configured and maintained directly by the customer.

- **Mirror your organizational structure** – Map out your teams, entities, departments, business units, regions, etc. Need to add a business unit? No problem. Corporater allows you to make ongoing modifications.
- **Describe your management system** – Link actions, individuals, objectives, KPIs, KRIs, risk, initiatives, strategy, and more into one model.
- **Map out your business processes and workflows** – From simple to complex processes, Corporater allows users to automate system governance through a rule-based approach. As conditions are triggered, the system runs automatic tasks which includes notifications, objects creation, and more.



## Configure custom dashboards, no coding needed

Configure custom dashboards to display relevant information, KPIs, and other metrics, based on specified organizational level.

- **Visualize, benchmark, and analyze** critical management information within business context.
- **Save time by using templates** – From risk factors to entire dashboards. Corporater templates make it easy create, manage and adjust your solution.
- **Assign user permissions to each dashboard** – Manage content visibility and access to specific dashboards and features.



## Automate your reporting

No more chasing around for data. No more copy & paste. Corporater enables you to pull information from your solution and generate comprehensive reports in a variety of popular formats.

- **Generate comprehensive reports** in popular formats including Word, Excel, PPT, and PDF, and automate their deployment via email to specified stakeholders.



## Visualize your data story

Transform your raw data into meaningful data visualizations to see status, trends, outliers, changes, and patterns in your data. As you execute on your strategy, Corporater powerful data visualizations let you tell the complete story of your journey and where you're headed.

- **Visualize, benchmark, and analyze critical management information in business context** and make educated decisions for your next course of action. Clearly see how and why you arrived at your conclusions, and assign responsibility for setting your plan into action. Once your plans are underway, you may easily monitor their progress through activity dashboards, automated notifications, and management review meetings.
- **Choose from numerous graphic representations** including charts, graphs, and risk heat maps, add your custom colors, and display them on your dashboards and reports.
- **Drill down on your KPIs** – To display the status and detailed information of a KPI, simply mouse over the KPI with your cursor. For a further drill-down, click on the KPI to access the KPI's page.



## Integrate your data from multiple sources into a single source of truth

Implement an efficient data governance framework across your organization to provide your teams with a single source of truth. With Corporater Configuration Studio, you may connect and transform data from multiple sources, automate workflows, set up two way integration, control user access with SSO, and more.

- **Corporater ETL** allows you to combine and process large amounts of structured and unstructured data, combine it with human input, and display it visually as insights on custom dashboards and reports.



## Set up alerts and notifications

Keep your teams informed and accountable.

- **Create custom alerts** to notify key stakeholders. Define custom alert rules, frequency, and recipients.
- **Set up automated notifications** to communicate assignments, overdue tasks, approval status, and more.

# Technology Highlights

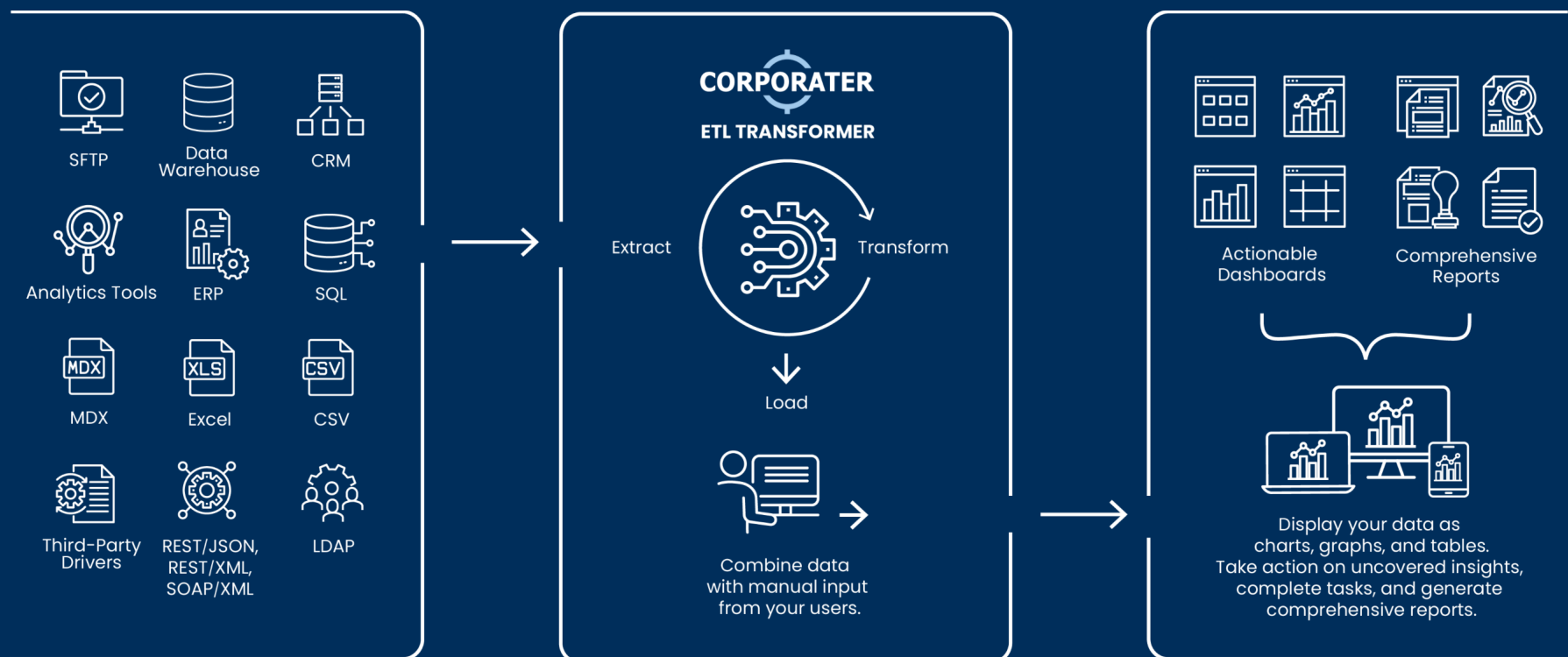
Integrate data from multiple various sources to have a complete overview of your business. Select deployment option that fits your needs – SaaS, on premise, or private cloud.



## Powerful Data Integration

Corporater BMP includes a robust ETL Transformer built to combine, process, and format large amounts of structured and unstructured data from various sources allowing you to see the complete picture of your business. Corporater supports integration from a wide range of sources, including Excel, CSV, SQL, MDX, Web-Services, SFTP and more, including support for 3rd party JDBC drivers.

Corporater enables organizations to aggregate data from multiple sources, combine it with user input, and display it neatly as data visualizations on custom dashboards, where users can take action on identified insights, complete tasks, and generate comprehensive reports.



## Flexible Deployment Options

Corporater BMP is a browser-based software delivered and hosted in the cloud using Amazon Web Services (AWS) infrastructure. If you'd rather host it on premises, you can do that too! We offer flexible deployment options – Corporater SaaS, on premise, or private cloud (e.g., AWS, Microsoft Azure, Google).

# Security & Compliance

---

Corporater Business Management Platform is built to meet the enterprise security, compliance and privacy requirements of our customers in highly regulated industries, such as financial services, government, oil & gas, healthcare, manufacturing, telecommunications, and others.

Corporater is VL5 Veracode Verified.



## Software Security

---

All Corporater solutions are developed through secure coding practices to keep your information guarded from data breaches and online security threats. Corporater is VL5 Veracode Verified and undergoes regular compliance audits to ensure the requirements of customers and regulators are met. Being a part of Veracode Verified program proves that Corporater meets a high standard of security necessary to keep customer data sufficiently protected.



## Data Protection

---

To demonstrate our compliance obligations with data protection and privacy laws, Corporater has implemented a wide range of security measures. In order to protect our customers and their data, Corporater has adopted a formal information security management (ISM) program that governs software development, infrastructure operation, administration, and delivery of the Corporater software. Corporater also fosters a strong culture of security and data protection awareness across all its offices. Corporater software is GDPR compliant.



## Access Control & SSO

---

Assign role-based permissions to your users to manage content visibility and access to specific dashboards and features. Control who can read, write, delete, access specific content within your solution. Enable your users to log in quickly, conveniently, and securely using single sign-on (SSO). Use Corporater built-in login authentication functionality with customized password policies or use your own identity provider such as AzureAD, ADFS, Okta, PingID or others.

# ISO 27001 Certification

---

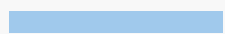
Corporater SaaS is ISO 27001 certified, and as such has a rigorous information security management system (ISMS) in place, which serves as a framework of policies and procedures that includes all legal, physical and technical controls involved in our information risk management processes.

ISO 27001 verifies that Corporater SaaS meets high standards of risk management and security controls to keep its customers' information assets secure.



**Corporater SaaS is ISO 27001 certified, and as such has a rigorous information security management system (ISMS) in place to keep our customers' data safe and protected.**

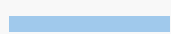
# Eliminate silos and jumpstart your journey to a connected enterprise



No matter where you are in your digital transformation journey, Corporater can help you get to the next step. Corporater enables organizations to digitalize and automate all aspects of their business, connect data with processes and people, and make smarter, data-driven decisions that drive business outcomes.

Strategic alignment is the cornerstone of good governance. Corporater enables organizations to connect the strategic, tactical, and operational layers of their business with a single tool, eliminate silos, and operate efficiently as a connected enterprise.

## Manage your strategy, tactics, and operations in one place



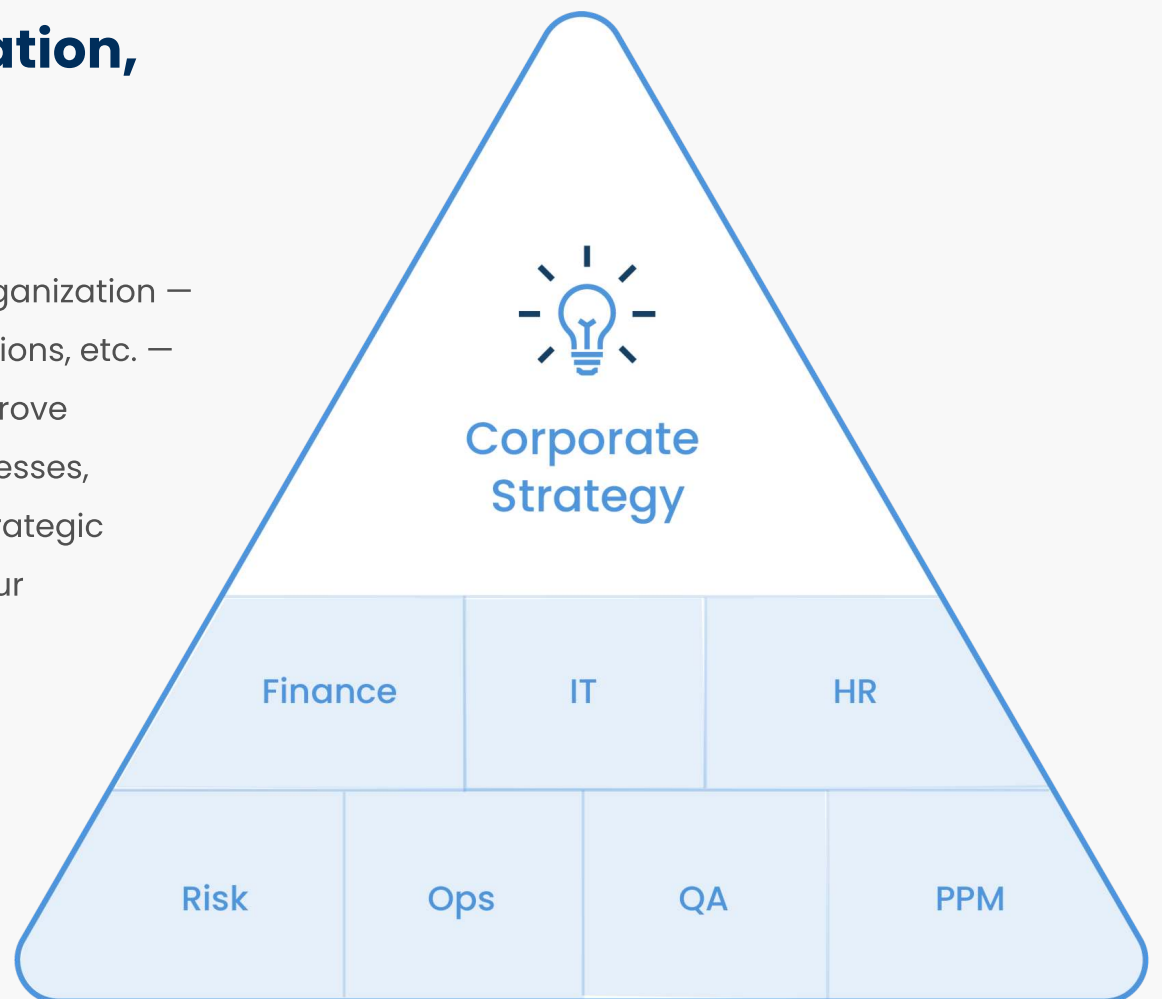
Manage your strategy, tactics, and operations with a single digital tool. Connect your operational units and maximize the cooperation between them. Automate your processes, optimize operational workflows, and provide everyone in your organization with a single source of truth.



## Connect your entire organization, not just your teams

With Corporater, you may connect your entire organization — teams, departments, business units, facilities, regions, etc. — using a single digital tool. Eliminate silos and improve efficiency by sharing common terminology, processes, and templates, and achieve a company-wide strategic alignment by keeping everyone connected to your corporate strategy.

A company-wide, strategic alignment leads to improved business performance, more engaged employees, more efficient operations, and higher long-term returns.



**UNIFIED:** Language • Process • Collaboration • Prioritization

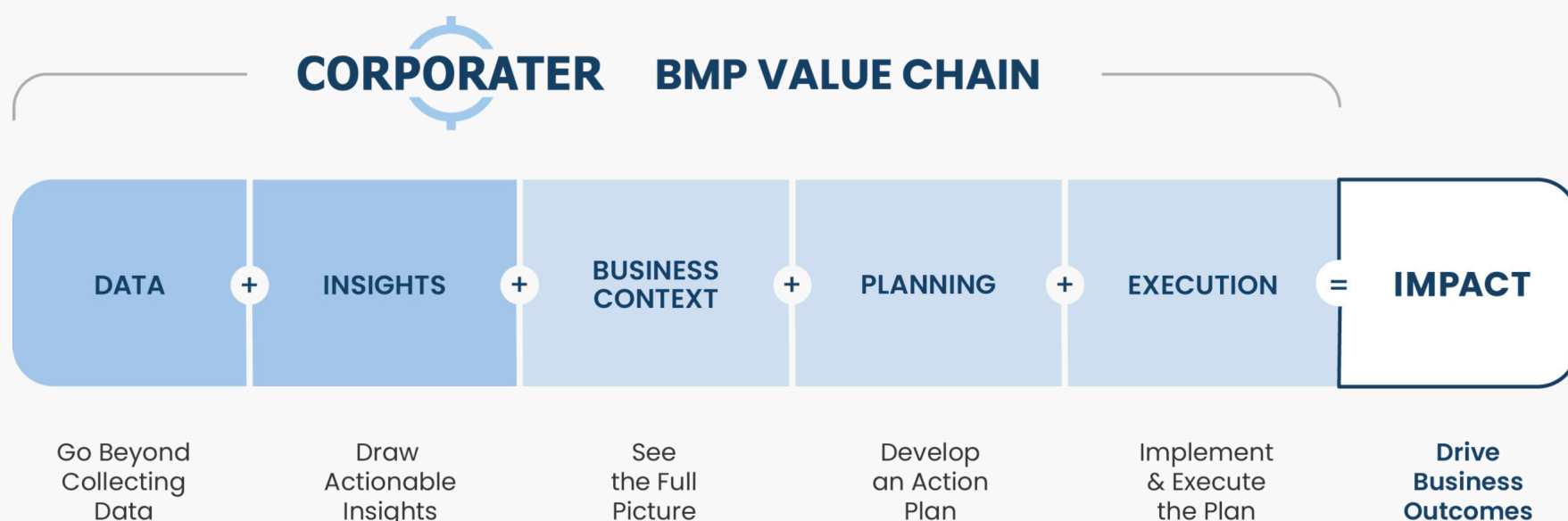


**Data and insights alone cannot drive business outcomes. To achieve business impact, insights need to be reviewed in business context and be put into action through a well-executed plan.**

# Bridge the gap from insight to impact

Data and insights alone cannot drive business outcomes. To achieve business impact, insights need to be reviewed in business context and be put into action through a well-executed plan.

Software solutions built on Corporater Business Management Platform (BMP) are engineered with five key components – **data, insights, business context, planning, and execution**. In combination these components function as a value chain that enables organizations to uncover actionable insights, review them in business context, develop a plan, and put the plan into action to **drive measurable business outcomes**.



## DATA



The value in data is its potential to generate insights that lead to business outcomes. Corporater enables organizations to collect and combine data from various data sources (via manual and / or automated input), scrub it in its raw form, and format it for visualization and analysis.

## INSIGHTS



Draw actionable insights. Corporater enables organizations to transform raw data into business intelligence by enriching data through “man + machine” approach and extracting insights within the tool. (Corporater can also integrate with third-party insights tools.) This allows organizations to gather all insights that a solid business case is built upon.

## BUSINESS CONTEXT



Data insights without the right business context are meaningless. Corporater enables organizations to have a “full picture” overview with data insights displayed within the context of a specific department, entity, or the entire business, so that users could make smarter, data-driven decisions.

## PLANNING



Turning insights into action requires a proper plan. Corporater enables users to use uncovered insights to develop integrated project plans complete with project objectives, key initiatives, milestones, task owners, risk & cost analysis, and due dates.

## EXECUTION

Delivering business impact is dependent on a successful execution of each item outlined in the project plan. Corporater provides an execution engine that drives the workflow / processes of your plan allowing you to execute multiple tasks in parallel or sequentially.

## IMPACT

Corporater BMP Value chain enables organizations to drive business outcomes such as:

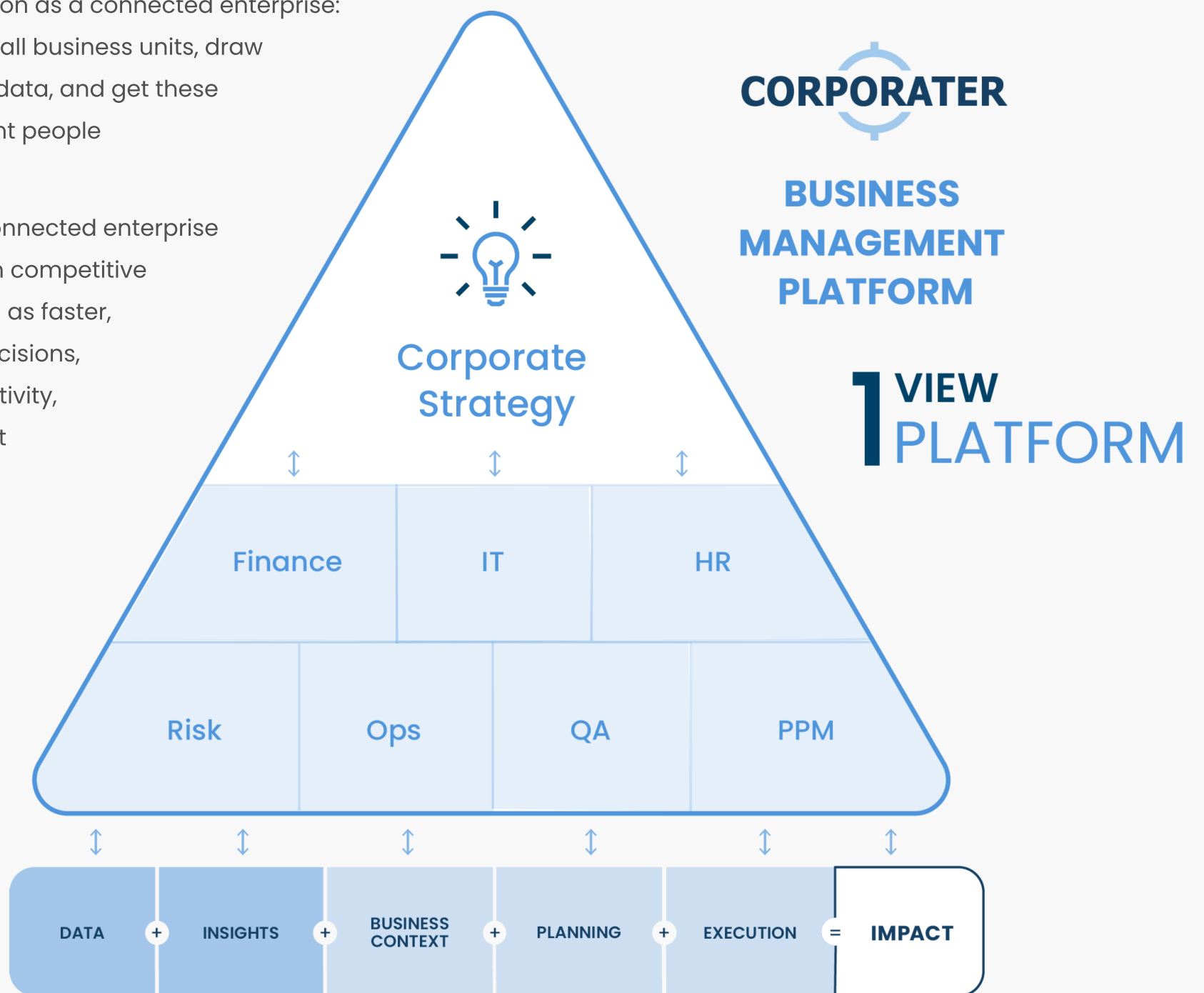
- Increased revenue and growth
- Increased profitability
- Strengthened business resilience
- Effective governance and oversight
- Improved business performance
- Ensured compliance and quality assurance
- Reduced cost
- Reduced risk and threats
- Increased productivity and engagement
- Increased retention rates and employee satisfaction
- Increased shareholder value
- Improved business operations
- Improved business maturity

# Run your business operations as a connected enterprise

Corporater enables organizations to see the whole picture and function as a connected enterprise:

collect data from all business units, draw insights from the data, and get these insights to the right people at the right time.

Operating as a connected enterprise locks in long-term competitive advantages, such as faster, more effective decisions, increased productivity, and more efficient operations.



## Smarter Decisions

Organizations that can input data and distribute insights across all its business units can make decisions more effectively.



## Complete Oversight

Having insights from all your teams, departments, and business units allows you to easily see where you need to make adjustments.



## More Efficient Operations

Interconnecting your operations will help you achieve more accurate tracking, uncover gaps, and optimize resources where needed.



# Integrated solutions for Governance, Performance, Risk, and Compliance

---

**Corporater is a world leader in providing integrated software solutions for Governance, Performance, Risk, and Compliance. Our solutions enable organizations to manage one or multiple aspects of their business using a single digital tool.**

Corporater enables organizations to implement corporate governance, continually improve their business performance, proactively manage risk, and stay on top of compliance.

Built on Corporater Business Management Platform, all Corporater solutions can be used independently as point solutions, or be seamlessly integrated with one another to form a holistic GRC program integrated with performance.

All Corporater solutions are built as accelerators — purpose-built solutions pre-configured with industry best practice frameworks, processes, and workflows — allowing you to save resources and get up and running in weeks, not months.

Based on ever-changing market demand, we offer a wide portfolio of solutions including Performance Management, Enterprise Risk Management, Compliance Management, Audit Management, and others.



**Get up and running in weeks, not months.**

# Governance, Monitoring & Automation Solutions

---



## Integrated Governance Framework

---

Establish a clear, fully integrated framework for the governance of performance, risk, and compliance in your organization. Use well-known tools and methods to establish and align goals, objectives, and thresholds across the organization. See the big picture and make informed data-driven decisions.



## Data & Information Governance

---

Create business value for your organization by using your data to drive revenue, optimize processes and reduce costs. Corporater Data & Information Governance solution enables organizations to Implement data governance framework, policies, and standards, and cultivate a data-driven culture.



## Corporate Dashboards & Data Automation

---

See the big picture — make better business decisions. Corporater enables you to aggregate all your data into a single system, analyze it in business context, and display it neatly on custom dashboards, where you can monitor the health of your organization and take instant action on uncovered insights.



## Business Process Management

---

Achieve operational efficiencies by connecting your people, data, processes, and functions into a single system. Corporater enables organizations to model, implement, and digitize business processes and workflows, automate repetitive, time-consuming tasks, and improve overall efficiency of day-to-day operations.



## Business Integrity Monitoring

---

Reduce misconduct, make an environmental impact, and build stronger brand by embracing a stronger ethical culture. Show all your stakeholders that Business Integrity is not just a talking point, but a critical practice area, and that you know, in tangible terms, why you are confident about the way you run your business.



## Digital Transformation Management

---

For a digital transformation to be effective, it shouldn't happen in silos. Corporater enables organizations to establish business process governance, digitize and automate their existing processes and procedures, and interconnect organizational departments, business units, and teams to realize the benefits of digital transformation.



## RegTech Docking & Integration

---

Bring valuable aggregated data into your management framework. Corporater RegTech Docking & Integration software enables organizations to integrate and dock data warehouses, analytics, data discovery tools, and AI-based technology needed to achieve a holistic view of regulatory compliance.



# Performance Management Solutions

---



## Corporate Performance Management

---

For over 20 years Corporater has enabled organizations worldwide to manage performance with our proven Corporate Performance Management (CPM) solution built to achieve an efficient, holistic management program of performance activities, projects, and KPIs, ensure strategy alignment, and drive business outcomes.



## Employee Performance Management

---

Build a world-class organization by strategically managing your employees' performance. Manage, monitor, and improve performance at an organizational, departmental, and individual level. Align employee goals, training, and incentives with your business strategy and link compensation to targeted metrics.



## KPIs, Dashboards, and Analytics

---

Visualize, benchmark, and analyze critical management information within business context. Automate data collection without technical complexity. Configure custom dashboards and compare KPIs with strategic objectives to ensure alignment across your organization. No coding needed.



**Have a holistic oversight of GRC and performance in a single view.**

# Risk Management Solutions

---



## Enterprise Risk Management

---

Corporater ERM solution is an enterprise-grade software that provides a comprehensive support in all steps of effective risk management. Identify and manage risk entity-wide, assign risk ownership, conduct risk assessments, analysis, and audits, select strategies for risk mitigation, and take necessary actions.



## Third Party Risk Management

---

Take a proactive approach to third-party risk management to keep your business, operations, and customer information protected against third-party risks. Verify adequate controls and ensure regulatory compliance arising from the use of third party service providers and IT vendors.



## Barrier Management

---

Improve the safety of your operations with Corporater Barrier Management software to keep your employees, customers, and the environment protected. Visualize the status of your risk controls and barriers in a bowtie diagram in one holistic view to monitor and minimize the possibility of incidents.



## Project & Portfolio Risk Management

---

Proactively identify, analyze, address, monitor and control portfolio risks across your organization. Digitize your risk assessment processes and continuously monitor risks that could jeopardize meeting your strategic business objectives. Increase your overall portfolio value and keep your organization prepared for the future.



## Operational Risk Management

---

Identify, assess, and address operational risks across all departments of your organization, demonstrate compliance, and reduce potential operating losses. Enable your organization to meet the challenges of ever-changing regulatory requirements by implementing a purpose-built software instead of adding headcount.



## IT & Cyber Risk Management

---

Manage security threats and vulnerabilities with Corporater IT and Cyber Risk Management software. Aggregate your risk data into a single source of truth, and proactively identify, assess, and mitigate risk threatening your organization's information assets, IT, and information security, with a single integrated tool.



## Integrated Risk Management

---

Empower your organization to achieve a holistic oversight of enterprise risk, compliance, an internal audit with Corporater Integrated Risk Management solution. Connect your data and gain insights on all aspects of risk throughout your organization, including cybersecurity, operational, and third-party risk.



## Risk Management Software for IDW PS 340 n.F

---

Manage risk in an integrated manner with Corporater Risk Management software. Establish an efficient risk management system for early detection of existential risks to protect your business, and demonstrate that appropriate measures have been taken to proactively identify and manage risks.



**Deutsche Telekom AG (DT) implemented Corporater Enterprise Risk Management solution in 2020.**

**The implementation of the tool was fast, professional and customer-centric. Corporater paid close attention to the DT needs and configured the tool in a way that fits to our existing processes. Our users say the tool is simple, user-friendly and easy to navigate.**

**Working with Corporater feels like you have a trustworthy partner that understands your needs and provides smart solutions.**



**Sönke Thun**

**Group Risk Governance | Deutsche Telekom AG**

# Regulatory & Organizational Compliance Management Solutions

---



## Regulatory Compliance Management

---

Stay prepared for everchanging regulatory requirements. Protect your organization from the risk of non-compliance, enhance corporate integrity, and give regulators a complete assurance that your regulatory obligations are met.



## SMCR Software

---

Establish responsibility for every department, business activity, and management function related to SMCR requirements. Demonstrate SMCR compliance, strengthen accountability, and enable your SMFs to drive your business forward.



## Incident Management

---

Manage and prevent incidents and non-conformities as an integral part of your holistic GRC program. Conduct risk assessments, and take corrective and preventive action (CAPA) to prevent incidents and non-conformities before they happen.



## Anti-Money Laundering Software

---

Establish an effective AML program to have a holistic view of your AML requirements, demonstrate compliance with regulations, and detect and prevent crimes such as money laundering, bribery and corruption, fraud, data theft, and non-compliance.



## Organizational Compliance Management

---

Achieve a holistic oversight of organizational compliance, increased employee engagement, and more efficient business operations. Corporater enables organizations to manage compliance based on various ISO frameworks or other industry best practices.



## Policy Management

---

Centralize your policies, procedures, and controls to have a clear, holistic oversight of your corporate policy management. Provide your employees with an easy-to-use centralized system to create policies, manage policy updates, and generate compliance reports.



## GDPR Compliance Software

---

Manage GDPR compliance with Corporater to enhance your information security and improve data governance. Build trust with your customers by keeping their data safe and protected, and ensure continued compliance with GDPR requirements.



## MAS IAC Software

---

Digitalize your operations to promote accountability and strengthen oversight over senior managers. Foster a culture of responsibility and ethical behavior among all employees, and demonstrate compliance with MAS five outcomes.



## ISO Compliance Software

Manage all your ISO standards with Corporater ISO compliance software. Drive continuous improvement, manage risk, and demonstrate your organization's commitment to high standards of quality, safety, and performance to all key stakeholders.



# Business Continuity & Resilience Solutions



## Business Continuity Management

Ensure business continuity, regulatory compliance, and continued maturity of your BCM program with Corporater Business Continuity Management software. Identify your organization's mission critical processes and assets, monitor risks and threats, and keep your organization prepared for internal and external disruptions.



## Operational Resilience

Establish a holistic operational resilience programme to protect your firm from the impact of operational disruptions and unexpected events. Demonstrate compliance with current financial services regulations, and evidence that your firm is prepared to detect, respond to, recover from, and adapt to disruptions.

# InfoSec & Privacy Management Solutions



## Information Security Management

Keep your organization protected from risks and threats of cyber-attacks, data theft, and security breaches. Corporater enables organizations to establish an integrated ISMS, safeguard critical and sensitive data, implement control measures, and proactively assess and manage threats and vulnerabilities.



## Data Privacy Management

Establish a solid data privacy program and deliver a strategic value to your organization with Corporater Data Privacy Management software. Keep your sensitive data and information protected, mitigate the risk of data loss, ensure compliance with regulatory requirements and audits, and build customer trust.

# Audit Management Solutions

---



## Internal Audit Management

---

Protect your organizational value, ensure compliance, and support good governance with Corporater Internal Audit Management solution. Conduct risk-based internal audits on the effectiveness of the organization's risk and compliance management, and provide comprehensive reports to the governing body and management.



## IT Audit Management

---

Empower your audit department with the tools they need to systematically evaluate the effectiveness of controls designed to keep your IT infrastructure and systems secure. Corporater IT Audit Management software streamlines the process of IT audit and enables organizations to proactively manage IT and security risks.



## Operational Audit Management

---

Establish efficient standardized audit processes with Corporater Operational Audit Management software. Objectively evaluate your systems, processes, and procedures, uncover areas for improvement, and optimize your operations accordingly to ensure compliant and efficient operations.



# Project & Portfolio Management Solutions

---



## Project & Portfolio Management

---

Drive better business decisions by bringing all your projects and portfolios into a single integrated system and linking them with your strategic objectives. Corporater Project Portfolio Management (PPM) software enables organization to achieve a holistic oversight of their project portfolio program and ensure strategic alignment.



## Investment Portfolio Management

---

Manage performance of your investment portfolios, minimize risk, and streamline internal processes. Corporater Investment Portfolio Management solution combines performance, portfolio, and risk management in a single integrated tool enabling organizations to make better-informed investment decisions.



# Strategy Management & BSC Solutions

---



## Strategy Management

---

Connect your teams, plans, and goals with a single integrated tool. Corporater Strategy Management software enables organizations to holistically plan, execute, and manage strategic initiatives, share corporate vision across the organization, and achieve corporate goals that drive sustainable business growth.



## Balanced Scorecard

---

Achieve a company-wide alignment, improve performance, and bring your strategic vision to life with Corporater Balanced Scorecard (BSC) software. Automate your balanced scorecard, link your corporate strategy with strategic initiatives and KPIs, and drive strategy execution with measurable business outcomes.



**Built on Corporater Business Management Platform, all Corporater solutions can be used independently as point solutions, or be seamlessly integrated with one another to form a holistic GRC program integrated with performance.**

# Building profitable customer relationships

Corporater puts customers and partners first with a proven track record of trusted, long-lasting partnerships. We collaborate with partners from around the world and offer different types of partnerships based on partners' expertise and desired level of engagement.

Corporater Partner Program is a powerful partnership program designed to help partners provide the best fit business solutions to their customers, increase revenue, and gain more business.

We believe that mutually beneficial partnerships is a critical aspect to a sustainable growth. Corporater works closely with selected partners to deliver trusted software solutions to customers around the world. Our partner program is designed for many different types of organizations ranging from consulting companies / domain experts to sales and IT partners / system integrators (SIs).



## Increase your profit margin

Achieve an increased revenue, faster implementations, shorter sales cycles, and a greater, more sustainable ROI.



## Enhance your product portfolio

Equip your customers with Corporater trusted solutions for governance, performance, risk, and compliance.



## Accelerate your business growth

Accelerate your business growth by combining your expertise with Corporater proven technology.



## Gain access to our Partner Portal

Gain access to training, demos, resources, and other business tools to grow your expertise with Corporater.



One platform. Countless opportunities.

# Management Consulting / Domain Expert Partners

The days when consulting companies could deliver their advice as a PowerPoint or a Word document are over.

Today's customers demand more. Corporater offers you a completely new way to service your clients.

As a management consulting / domain expert, there are three main ways for you to engage with us:

 <b>Use Corporater BMP as a consulting tool</b>	 <b>Use Corporater BMP as a digitalization platform</b>	 <b>Use Corporater BMP as a ServWare platform</b>
<p>Use Corporater BMP as a consulting tool to model software possibilities for your customers. At the end of your consulting engagement, you provide your customers with an access to an electronic copy of your consulting work.</p> <hr/> <p><b>With Corporater you can:</b></p> <ul style="list-style-type: none"> <li>■ Build your IP / processes / domain expertise into the platform / solution</li> <li>■ Use the solution as a digital consulting tool</li> <li>■ Collaborate with your clients through the tool</li> <li>■ Brand the solution with your brand</li> <li>■ Stand out from competition with the new way of consult your clients</li> </ul> <hr/> <p><b>Benefits:</b></p> <ul style="list-style-type: none"> <li>■ Higher quality and better oversight</li> <li>■ Lower effort for your team – have the client work in the tool as well</li> <li>■ More profitable / less time consuming in documenting</li> <li>■ More fun and energy – the new way of working has side effects that you might not be aware of</li> <li>■ Low investments and no technology push onto your clients</li> </ul>	<p>As an extension to “Corporater BMP as a consulting tool,” you take it a step further and use Corporater BMP as a full digitalization platform to configure your own signature business solutions that you may implement for your customers.</p> <hr/> <p><b>With Corporater you can:</b></p> <ul style="list-style-type: none"> <li>■ Offer your clients world class business solutions with your IP / processes / domain expertise built into the solution (signature solution)</li> <li>■ Collaborate with your clients through the tool throughout the solution implementation</li> <li>■ Brand the solution as your own signature solution</li> <li>■ Stand out from competition with the new way of consult and implement solutions at your clients</li> <li>■ Leave behind a fully operating implemented solution with your customers</li> </ul> <hr/> <p><b>Benefits:</b></p> <ul style="list-style-type: none"> <li>■ You follow your clients all the way – from advice to an implemented solution</li> <li>■ Deliver your own signature solution and ongoing services to your clients – year after year</li> <li>■ Become more profitable – earn money by creating and selling your signature solution and servicing your clients on a continuous basis</li> <li>■ Become less people-dependent as the IP is embedded in the solution</li> </ul>	<p>Use Corporater BMP as a ServWare platform – a platform where you you can service your clients on a continuous basis using your own signature software solutions. Support your clients with best in class services and software year after year.</p> <hr/> <p><b>With Corporater you can:</b></p> <ul style="list-style-type: none"> <li>■ Offer your clients world class business solutions with your IP / processes / domain expertise built into the solution (signature solution)</li> <li>■ Collaborate with your clients through the tool throughout the solution implementation</li> <li>■ Brand the solution as your own signature solution</li> <li>■ Stand out from competition with the new way of consult and implement solutions at your clients</li> <li>■ Leave behind a fully operating implemented solution with your customers</li> <li>■ Continuously service your clients by delivering value added services throughout the customer lifetime</li> </ul> <hr/> <p><b>Benefits:</b></p> <ul style="list-style-type: none"> <li>■ You follow your clients all the way – from advice to an implemented solution</li> <li>■ Deliver your own signature solution and ongoing services to your clients – year after year</li> <li>■ Become more profitable – earn money by creating and selling your signature solution and servicing your clients on a continuous basis</li> <li>■ Become less people-dependent as the IP is embedded in the solution</li> <li>■ Avoid the risk of letting competitors taking over the customer relationship – with your own signature solution and ongoing service delivery, you are safe</li> </ul>

# Sales and IT Partners / System Integrators (SIs)

If you know that your customers want off-the-shelf solutions and are not even considering to build their own solution, you may consider signing up for “Sales and IT Partners / System Integrators (SIs) partnership with Corporater. The benefits will be both for you as a partner, as well as for your clients that will experience working in a solid and a mature technology.



## Use Corporater proven off-the-shelf GPRC solutions to expand your offering and grow your business

Simplify governance, performance, risk and compliance management for your customers with Corporater proven off-the-shelf GPRC solutions that are flexible, easy to use, and designed for your success. Corporater is built as a highly configurable software allowing you to create business solutions that fit your customers' specific business requirements.

### With Corporater you can:

- Service your clients on their business management needs through the Business Management Platform
- Start building more high-end consulting capabilities in the business management domain
- Get access to the managerial levels that are inquiring about such solutions
- Partner with a software vendor that will stick to being a software vendor (and not a consulting company)

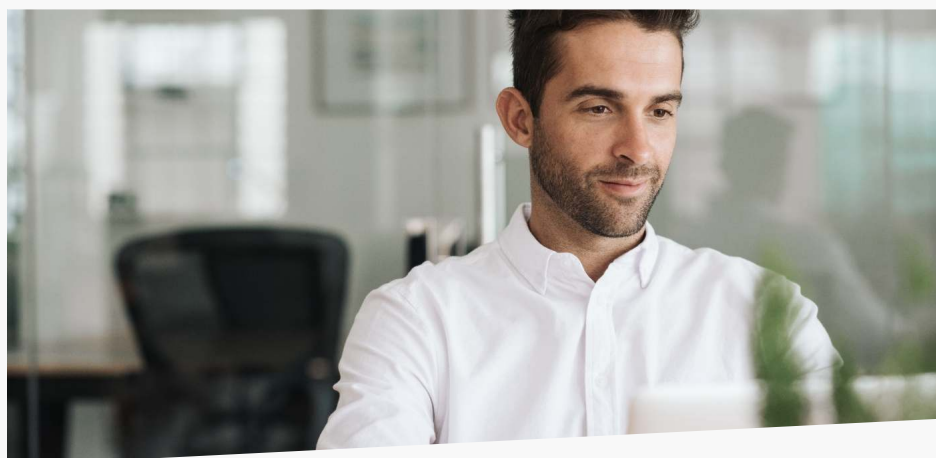
### Benefits:

- Extend and service your clients within the Business Management Domain
- Increase your win rate and take more of the consulting business with your clients
- Utilize existing client relations and make more profit

### Partnership Criteria:

- Partnership has a strategic anchoring within the SI
- Partner has a certain size and track-record
- Partner has sales capacity
- Partner has customers and prospects that solutions can be offered to
- Partner commits to training and certification, and invests in the partnership
- Partner sells, implements, and supports their customers
- Partner has marketing capabilities to generate leads

To learn more about Corporater Partner program, visit [www.corporater.com/partner-program](http://www.corporater.com/partner-program)



## Corporater Partner Portal

All Corporater partners enjoy access to Orbit - Corporater Partner Portal - a single, online, global gateway to Corporater partner tools and information needed to grow partners' expertise with Corporater.

Already a Corporater partner?

Log in now at [www.corporaterorbit.com](http://www.corporaterorbit.com)

A man and a woman in business attire are looking at a laptop screen together. The man is on the left, wearing glasses and a light-colored blazer over a dark shirt. The woman is on the right, with short white hair, wearing a light blue blazer and a patterned scarf. They are both smiling and appear to be in a collaborative work environment.

“

Corporater is a wonderful platform for business management. As you know business performance is now legislated by government as something that needs to be followed. I don't think we need to go and reinvent the wheel when you have a fantastic product like Corporater.



Richard Siya Msweli  
Head of New Markets | Adapt IT

## OUR OFFICES

# Wherever you are in the world, we are here for you



OFFICES AROUND THE GLOBE

# 10

SERVING CUSTOMERS IN OVER

# 50 countries

**Corporater is headquartered in Stavanger, Norway, and we have a network of offices around the world to serve our customers and partners wherever they need us.**

Our global presence enables us to serve and support our customers around the world. We operate in over 50 countries in Europe, North & South America, Asia, and the Middle East & Africa.

## CONTACT

# Get in touch with us

---

To learn more about how Corporater can help you manage your business and to contact us, visit:

[www.corporater.com](http://www.corporater.com)



Enabling organizations to drive business outcomes since 2000.



Corporater is a global software company that enables medium and large organizations worldwide to manage their business with integrated solutions for governance, performance, risk, and compliance built on a single platform.

We use our gains to make social impact.

[www.corporater.com](http://www.corporater.com)

